



3030A Wideband RF Digitizer PXI Module



Operating Manual

Document no. 46892/718

Issue 7

12 February 2008

About this manual

This manual applies to instruments with software issues of 2.0 and higher.

This manual explains how to set up and configure an Aeroflex 3030A wideband RF digitizer PXI module. Where necessary, it refers you to the appropriate installation documents that are supplied with the module.

This manual provides information about how to configure the module as a stand-alone device. However, one of the advantages of Aeroflex 3000 Series PXI modules is their ability to form versatile test instruments, when used with other such modules and running 3000 Series application software.

Getting Started with afDigitizer (supplied on the CD-ROM that accompanies each module (see [Associated documentation](#))) explains how to set up and configure a 3030 Series RF digitizer with a 3010 Series RF synthesizer module to form a high performance digitizer instrument. Using the digitizer soft front panel and/or dll or COM object supplied, the modules form an instrument that provides the functionality and performance of an integrated, highly-specified RF digitizer, but with the adaptability to satisfy a diverse range of test or measurement requirements.

© Aeroflex International Ltd. 2007

*No part of this document may be reproduced or transmitted in any form
or by any means, electronic or mechanical, including photocopying,
or recorded by any information storage or retrieval system,
without permission in writing by Aeroflex International Ltd.
(hereafter referred to throughout the document as 'Aeroflex').*

Intended audience

Users who need to configure and operate the 3030A wideband RF digitizer to down-convert and digitize RF signals.

This manual is intended for first-time users, to provide familiarity with basic operation. Programming is not covered in this document but is documented fully in the [help files](#) that accompany the drivers and associated software on the CD-ROM.

Driver version

This PXI RF module is designed to be used with the latest software driver version supplied on the Aeroflex 3000 Series PXI Modules CD-ROM part no. 46886/028. Operation with earlier versions of driver software may not be supported.

Structure

Chapter 1	General information
Chapter 2	Installation
Chapter 3	Operation
Chapter 4	Brief technical description
Chapter 5	Acceptance testing

Associated documentation

The following documentation covers specific aspects of this equipment:

PXI Modules CD-ROM	Part no. 46886/028	Compilation containing soft front panels, drivers, application software, data sheets, getting started and operating manuals for this and other modules in the 3000 Series.
3000 Series PXI Modules Common Installation Guide	Part no. 46882/663	Detailed information on installing modules into a rack, external connections, powering up and installing drivers.
3000 Series PXI Modules Installation Guide for Chassis	Part no. 46882/667	Explains how to set up a populated chassis ready for use.
PXI Studio User Guide	Part no: 46892/809	Setting up and using the universal PXI application for system configuration and operation.
Getting Started with afDigitizer	Part no. 46892/676	Setting up and using the RF digitizer application for 3010 Series and 3030 Series modules.

Preface

The PXI concept

VXI and GPIB systems meet the specific needs of instrumentation users but are often too large and expensive for mainstream applications. PC-based instrumentation may cost less but cannot meet the environmental and operational requirements of many systems.

PXI (PCI Extensions for Instrumentation) is based on CompactPCI, itself based on the PCI standard. PCI was designed for desktop machines but CompactPCI was designed for industrial applications, and features a rugged Eurocard format with easy insertion and removal. PXI adds to the CompactPCI specification by defining system-level specifications for timing, synchronization, cooling, environmental testing, and software. While PXI extends CompactPCI, it also maintains complete interoperability so that you can use any CompactPCI-compliant product in a PXI system and vice versa. PXI also makes use of Windows software, VXI timing and triggering, and VXIplug&play instrument drivers to provide powerful and affordable systems.

IQCreator[®] is a registered trademark of Aeroflex International Inc. in the US

PXI[™] is a registered trademark of the PXI Systems Alliance

Windows[™], Windows XP[™] and Windows NT[™] are trademarks of Microsoft Corporation

Abbreviations/acronyms

ACLR	Adjacent Channel Leakage Ratio
ACP	Adjacent Channel Power
ACPR	Adjacent Channel Power Ratio
ADC	Analog-to-Digital Converter
AM	Amplitude Modulation
ARB	Arbitrary Waveform Generator
CW	Continuous Wave
DAC	Digital-to-Analog Converter
dB	Decibels
dBc	Decibels relative to the carrier level
dBm	Decibels relative to 1 mW
FFT	Fast Fourier Transform
FM	Frequency Modulation
FPGA	Field Programmable Gate Array
GND	Ground
IQ	In-phase/Quadrature
LO	Local Oscillator
LSTB	List Strobe
LVDS	Low-Voltage Differential Signaling
PCI	Peripheral Component Interconnect
Pk-Pk	Peak-to-Peak

PREFACE

PXI	PCI eXtensions for Instrumentation
RF	Radio Frequency
RMS	Root Mean Square
SFP	Soft Front Panel
SMA	SubMiniature version A (connector)
SMB	SubMiniature version B (connector)
TDMA	Time Division Multiple Access
TRIG	Trigger
TTL	Transistor-Transistor Logic
UUT	Unit Under Test
VCO	Voltage-Controlled Oscillator
VHDCI	Very High Density Connector Interface
VSWR	Voltage Standing-Wave Ratio
VXI	VMEbus Extension for Instrumentation

Chapter 1 GENERAL INFORMATION



Introduction

Welcome to the operating manual for the 3030A Wideband RF Digitizer PXI module.

The 3030A, when used with a 3010 Series PXI RF synthesizer module, forms a compact wideband RF digitizer that occupies only three slots in a 3U PXI chassis.

Applications

The 3030A down-converts and digitizes RF signals. It converts an analog RF waveform presented at its RF port into a series of amplitude- and phase-corrected digital IF or IQ data pairs at its LVDS port. Software supplied with the module allows for spectrum analysis of the digitized signals.

The 3030A can be used in RF test and measurement systems used in development or manufacturing. Applications span all areas of UHF radio communications.

Wide frequency coverage

The 3030A provides continuous frequency coverage from 330 MHz to 3 GHz.

A linear single-stage down-converter converts input signals to an IF centered on 77.76 MHz.

Input range and accuracy

Input level control is provided by electronic switched attenuation, which helps to maximize the usable dynamic range. Good level accuracy and repeatability make the module ideal for high-volume manufacturing.

Wide bandwidth

The 3030A produces a 36 MHz-wide digitized IF signal, with amplitude and phase correction applied across 33 MHz. Full-rate digital IF or decimated IQ data can be output via LVDS, useful for real-time emulation. Data can also be captured to internal memory and read over the PCI bus.

For narrowband signal analysis, the 3030A provides internal digital down-conversion and decimation. Lowering the sample rate allows longer events to be captured. The 3030A contains digital resampling filters that allow you to set the sample rate, as well as numerous preset values associated with common digital communications standards.

Signal routing

A configurable routing matrix provides flexibility in how you interconnect signals on the PXI backplane and the LVDS front-panel input. Predefined routing scenarios can be selected, or your own matrix settings stored and recalled.

Triggering and synchronization

The 3030A synchronizes to an external 10 MHz signal (generally supplied by a 3010/3011 RF Synthesizer). Triggering is external, from the PXI backplane or directly from the front-panel LVDS connector or SMB TTL input, or internal, from the internal timer or level trigger.

List mode

In list mode, up to 128 internal hardware settings can be pre-calculated and stored, providing fast switching of frequency whilst maintaining RF output accuracy. List addresses are sourced externally or from an internal counter, possibly driven by the test application controlling the 3030A. In production, list mode enables faster testing and simplified programming.

Software

The 3030A is supplied with a VXI PNP driver and soft front panel for use as a self-contained module. An instrument-level soft front panel is also provided, together with an associated dll/COM object, combining the controls of the 3030A together with the 3010/3011 RF Synthesizer. Refer to *Getting Started with afDigitizer* (part no. 46892/676) supplied on the PXI Modules CD-ROM part no. 46886/028. An FFT spectrum analyzer measurement suite is supplied, and optional signal analysis components are available to measure power, modulation quality and spectra to recognized standards.

PXI Studio, supplied with the module, configures your PXI modules as logical instruments using an intuitive and powerful graphical interface. Currently, PXI Studio provides comprehensive signal generator, digitizer and spectrum analyzer applications and further development will provide analysis plugins to suit any modulation scheme.

RF Investigator, also supplied with the module, is an application that provides combined operation of all Aeroflex 3000 Series modules from a single user interface, especially useful for acceptance testing.

Deliverable items

- 3030A Wideband RF Digitizer PXI module
- PXI Modules CD-ROM (part no. 46886/028), containing soft front panels, drivers, application software, data sheets, getting started and operating manuals for this and other modules in the 3000 Series
- *3000 Series PXI Modules Common Installation Guide*, part no. 46882/663
- *3000 Series PXI Modules Installation Guide for Chassis*, part no. 46882/667
- SMA connector cable, part no. 43139/590 (2 off)

Cleaning

Before commencing any cleaning, switch off the chassis and disconnect it from the supply. You can wipe the front panel of the module using a soft cloth moistened in water, taking care not to wet the connectors. Do not use aerosol or liquid solvent cleaners.

Putting into storage

If you put the module into storage, ensure that the following conditions are not exceeded:

Temperature range: -20 to $+70^{\circ}\text{C}$ (-4 to $+158^{\circ}\text{F}$)
Humidity: 5 to 93%, non-condensing

Chapter 2 INSTALLATION

WARNING

Initial visual inspection

Refer to the 3000 Series Common Installation Guide 46882/663.

CAUTION

Handling precautions

Refer to the 3000 Series Common Installation Guide 46882/663.

Hardware installation

Installing the module into the PXI chassis

Refer to the 3000 Series Common Installation Guide 46882/663 and Installation Guide for Chassis 46882/667.

Connector care and maintenance

How to connect and torque an SMA connector

- 1 First, ensure that the mating halves of the connector are correctly aligned.
- 2 Next, engage the threads of the nut and tighten it by hand, ensuring that the mating halves do not move relative to each other.
- 3 Then use a torque spanner to tighten the connector, in order to ensure consistent matching and to avoid mechanical stress.

Torque settings for connectors are:

0.56 Nm test torque (development use, semi-permanent installations)

1 Nm final torque (permanent installations)

Never use pliers to tighten connectors.

Maintenance

SMA

Clean connectors regularly, using a cotton bud dipped in isopropyl alcohol. Wipe within the connector cavity, then use a dry cotton bud to finish off. Check for any deposits.

Do not use other cleaners, as they can cause damage to the plastic insulators within the connectors.

Cap unused connectors.

PCI

Protect PCI connector pins by keeping modules in their original packing when not fitted in the rack.

Chapter 3 OPERATION

Front-panel connectors

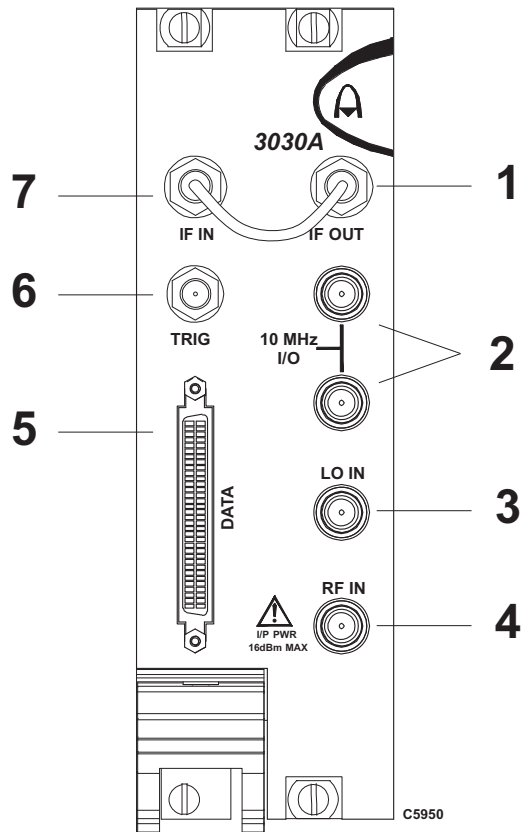


Fig. 3-1 3030A front panel

- | | | |
|---|------------|---|
| 1 | IF OUT | 77.76 MHz, nominally -5 dB relative to RF input, 0 dB input attenuation selected. SMA socket, 50 Ω . |
| 2 | 10 MHz I/O | Two SMA I/O sockets in parallel.
Input
Ext frequency standard input for sampling clock. 0.4 to 4 V pk-pk into 50 Ω .
Output
Link-through from input. |
| 3 | LO IN | 1.5 to 3 GHz, nominally 0 dBm. SMA socket, 50 Ω . |
| 4 | RF IN | +16 dBm max. (0 dB input attenuation). SMA socket, 50 Ω . |
| 5 | DATA | 68-way VHDCI connector for LVDS data I/O, 14-bit IQ digital data output.
See Appendix A for details. |
| 6 | TRIG | TTL +ve or -ve edge. SMB socket, 50 Ω . |
| 7 | IF IN | 77.76 MHz input, -15 to $+10$ dBm for full-scale digitizer. SMA socket, 50 Ω . |

CAUTION

Maximum safe powers

RF input: **+16 dBm** continuous (0 dB input attenuation)

IF input: **+10 dBm** (0 dB IF attenuation)

Soft front panel (af3030_sfp)

The soft front panel provides a graphical interface for operating the module. It is intended for testing and diagnosing, for demonstration and training, and for basic operation of the module. It represents most of the functions available in the instrument driver. It is not however a comprehensive application suitable for measurements; for this, use the afDigitizer dll, the afcomDigitizer COM object, or PXI Studio.

Installation

The soft front panel is installed during the driver installation process (refer to the *3000 Series PXI Modules Common Installation Guide*, part no. 46882/663).

Open the *AF3030_sfp.exe* file: this is in the *C:\VXIPNP\WinNT\af3030* directory on a Windows NT machine, for example. It is also accessible from the Windows Start menu under *Programs\Aeroflex\PXI Module Front Panels\AF3030 Front Panel*. The soft front panel, similar to that in Fig. 3-2, is displayed.

Detailed help information

Soft front panel controls are all available as [driver export functions](#) unless noted otherwise, and are documented in the [help files](#). This operating manual provides an overview of the facilities that the module provides and summarizes its operation; however, refer to the help files for detailed descriptions of functions, together with their parameter lists and return values.

OPERATION

Menu bar

IF/IQ data format

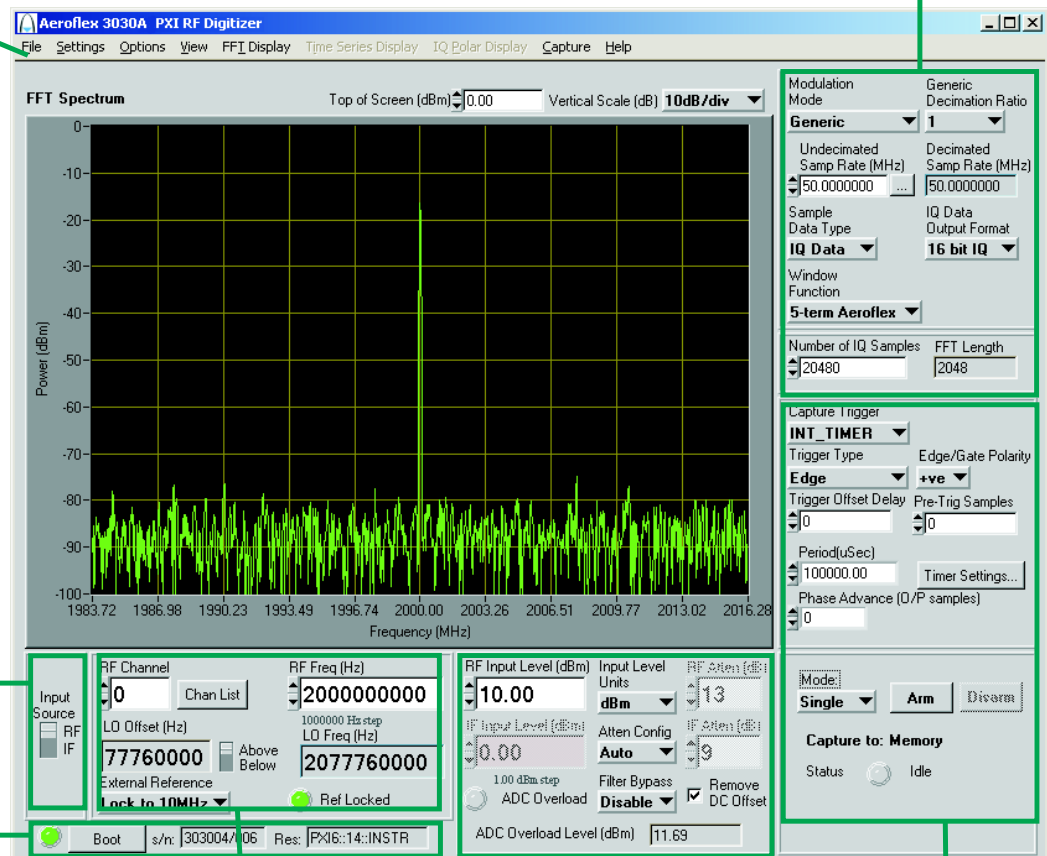
Input source

Boot

RF tuning

Input conditioning

Acquisition & triggering



C6189

Fig. 3-2 3030A soft front panel

Soft front panel controls

Menu bar

File

Save Captured Data (as ASCII file)... captures the 16-bit sample data into the specified ASCII file.

Save Captured Data (as Binary file)... captures the 16-bit sample data into the specified binary file.

Click **Exit** to close the application.

Settings

Load and **Save** allow you to load and save soft front panel configurations from and to your preferred locations. If you did not change the default location when installing the software, it is *C:\VXIPNP\WinNT\af3030\settings*, and configurations are saved as *.ini* files.

You can edit, copy and paste settings files as required; for example, you may want to save only a new routing setup without changing other parameters. Edit the saved *.ini* file using a text editor (for example, Notepad) to remove unwanted parameters. Ensure only that you do not delete the General (VendorID, DeviceID) and Version (Major/Minor) parameters. Save the changed file. When the settings file is next loaded, the configuration of the soft front panel changes to match the parameters remaining in the settings file.

Directories lets you choose the default directory for your front-panel configuration settings.

LVDS allows you to set each LVDS Data, Auxiliary and Marker mode for input, output or tri-state (default) operation.

- Spare 0 is controlled by LVDS Data Mode. To use Spare 0 as a trigger input, set LVDS Data to Input. To use Spare 0 as a trigger output, set LVDS Data to Output.
- To use an auxiliary bit as a trigger input, set LVDS Auxiliary to Input. To use an auxiliary bit as a trigger output, set LVDS Auxiliary to Output.
- To use a marker bit as a trigger input, set LVDS Marker to Input. To use a marker bit as a trigger output, set LVDS Marker to Output.
- **IF Data Position** places 14-bit IF data in either the upper 14 bits of a 16-bit word (the lower two bits are padded with 0s) or lower 14 bits of a 16-bit word (upper two bits are sign extended), as required by the processing software.

Routing Scenarios allows you to select a predefined routing matrix connection. A tick against the scenario's title shows that it is selected.

Selecting or removing a routing scenario affects only the connections specific to that scenario, and does not change any other routing connections. However, changing the routing matrix connections of any scenario invalidates that scenario.

Routing Matrix displays a matrix that provides interconnection between input and output signals on the PXI backplane bus, the DATA connector, and the TRIG input, as shown diagrammatically in Fig. 3-3. This provides great flexibility in how you can route signals between modules.

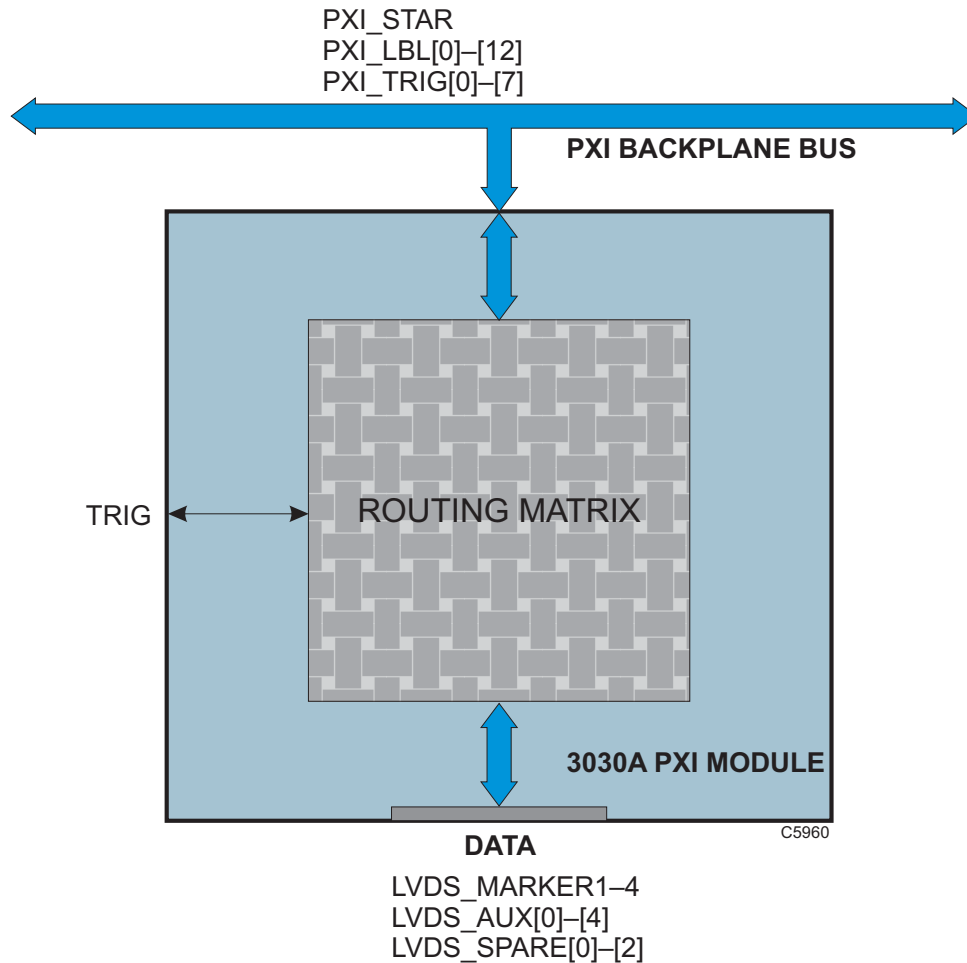


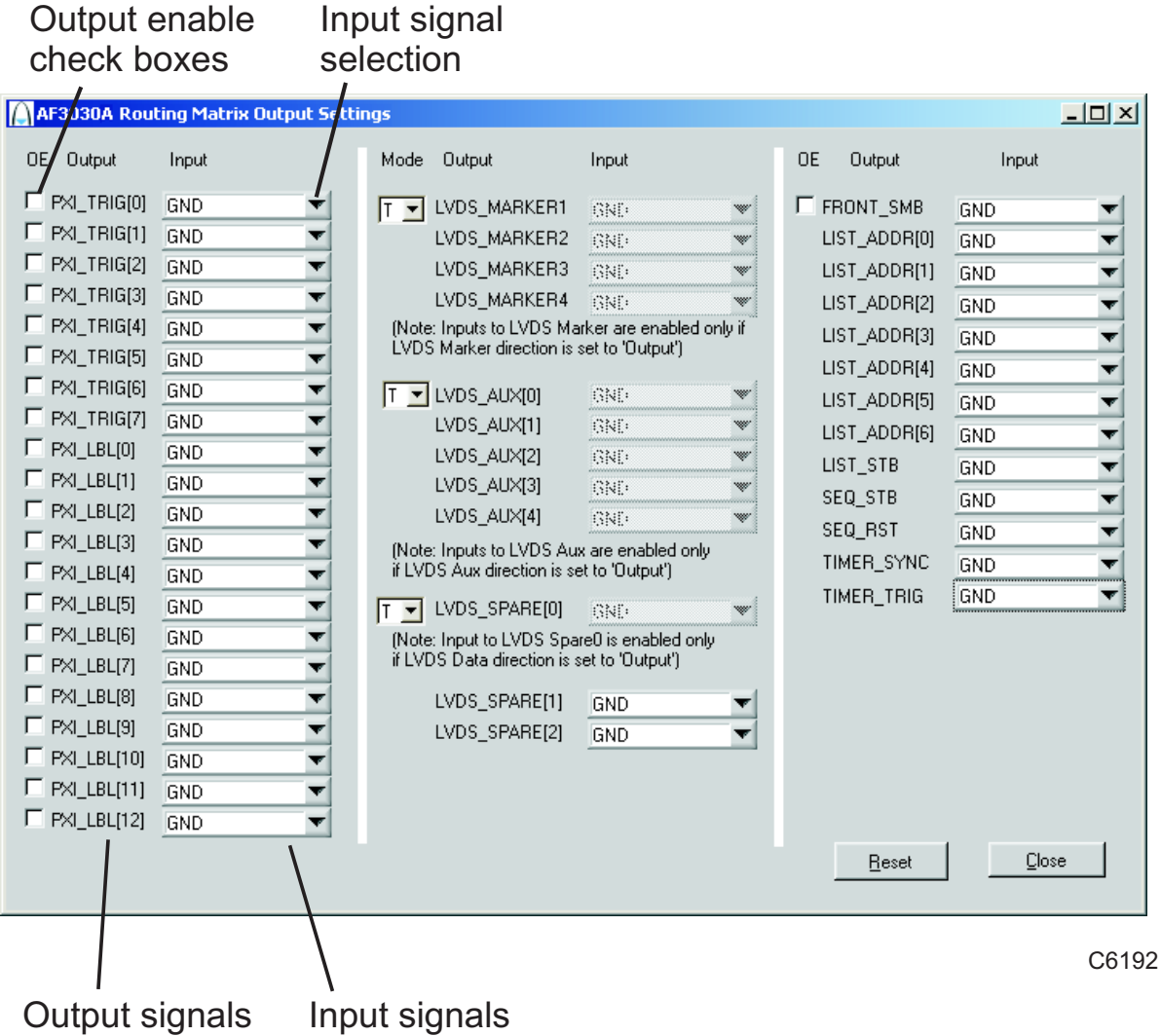
Fig. 3-3 Routing matrix in 3030A

Use the routing matrix (Fig. 3-4) to interconnect signals. Output signals form the body of the matrix. Select appropriate input signals from the drop-down menus under each down-arrow to create the interconnections.

Check the boxes to enable the outputs and select the appropriate LVDS mode.

Reset connects all input signals to GND and disables the outputs (LVDS outputs go tri-state). This is the default state.

When operating the module in default digitizer mode (routing matrix reset), all necessary input, output and trigger signals are available on front-panel DATA, SMA and SMB connectors and there is no need to configure the matrix. If you need to set up particular signal routings, you can define these using the drop-down menus on the matrix and save them using the **Load** and **Save** commands in **Settings**, or use **Routing Scenarios** to access pre-set alternative routings, or contact Aeroflex if you need assistance in defining particular routing requirements.



C6192

Fig. 3-4 Routing matrix inputs and outputs

Optimization allows you to choose how the module compensates for the effect of temperature changes and RF frequency response.

Auto Temperature Optimization (default) monitors the temperature of the module at regular intervals and adjusts the correction figure for the current temperature. You can turn this off if it might interfere with a time-critical measurement. It is also turned off automatically when List Mode is enabled.

Optimize Temperature Correction forces an immediate update, after which the timer starts a new interval.

Auto Flatness Mode compensates for the slope of the RF response, and may be needed for measurements taken over a wide bandwidth. It applies compensation to ‘flatten’ the response over the chosen bandwidth. The change in RF level due to RF response may not be significant for narrow-bandwidth measurements, which should be taken into account as auto flatness mode compensation may slow measurement time considerably. Default is ‘off’.

Options

Allows you to enable or disable additional instrument options if you have the appropriate password (available from the Aeroflex sales desk). Click **Edit...** to display the options screen (Fig. 3-5).

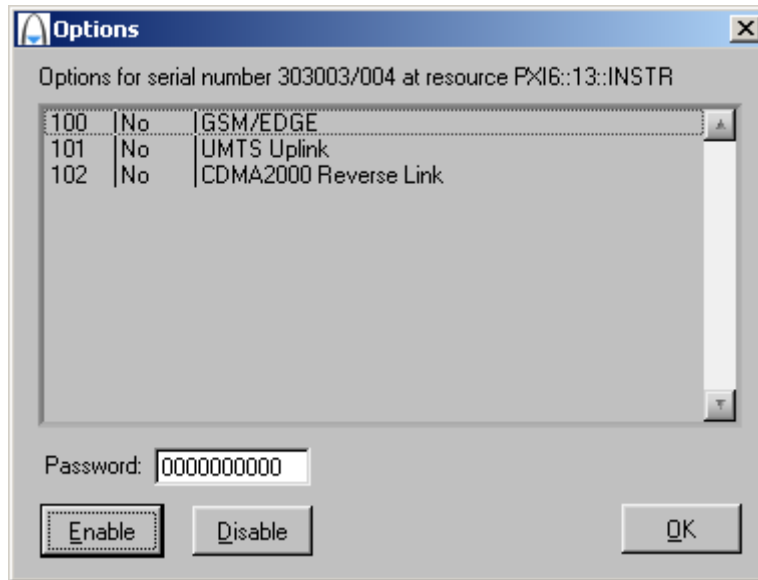


Fig. 3-5 Options screen

Disabled options are shown grayed out. To enable an option, enter the appropriate password. Click **Enable**. The enabled option is shown highlighted in green. Click **OK**.

View

Allows you to view results in different formats.

View FFT (default) displays a single graph showing logarithmic power versus frequency. The default span is 66% of full span. You can modify the top of screen reference power (dBm) and the vertical scaling (dB/div). Select other display settings from [FFT Display](#).

View Time Series displays two graphs showing I and Q magnitude (in IQ mode) or IF magnitude (in IF mode) versus sample number. Sample Start and Sample End let you change the start and stop time of samples, allowing you to 'zoom in' on data. Select other display settings from [Time Series Display](#).

View IQ Polar presents I and Q data as a polar response. Select other display settings from [IQ Polar Display](#).

View Numeric Data displays IQ or IF data that can be placed alongside either the FFT or Time Series views. Numeric data representing the values of I and Q capture data is displayed as I first, followed by Q. Use the scroll bar to inspect long sample records.

FFT Display

This menu is enabled only when View\View FFT is selected. It allows you to hide/display the graticule and save the dB levels of the trace as a *.txt* or other file.

Graticule **V**isible hides or displays the graticule.

The **Span** menu selects either Full or Truncated (approx. 66%) span. For example, with Modulation Mode set to UMTS and with a Decimation Ratio of 2, Full span is the full decimated bandwidth of the module (30.72 MHz) and Truncated limits this to 20 MHz, placing graticule lines at integer frequencies for easier reading. For Generic Modulation Mode, the Full and Truncated limits are 51.84 MHz and 33 MHz respectively, reflecting the maximum available span of the module with a Decimation Ratio of 2.

Save FFT Trace saves the current FFT trace as a text file. The FFT trace is recorded as an array of dB values. The length of the array is displayed in the FFT Length field. The text file's location is defined in File Setup...

File Setup... allows you to select the filename and location for the FFT trace.

Time Series Display

When **View Time Series** is selected, the Time Series Display menu is enabled, allowing you view I and Q traces on two separate graphs or overlaid in different colors.

Graticule Visible hides or displays the graticule.

IQ Separate Graphs displays separate graphs of Time Series (I) and Time Series (Q). Both graphs are displayed with a common horizontal axis scaling (as set by Sample Start and Sample End).

IQ Overlaid Graph displays colored I and Q traces on a single graph; I is yellow and Q is green.

Full Width Sample View adjusts the number of samples displayed in the graph to the number of samples captured.

Y-axis Autoscale: when selected, automatically sets the scaling of signal magnitude to the peak value. When it is deselected, you can set the values manually using the Magnitude Min and Magnitude Max controls above the display. The values of Magnitude Min and Magnitude Max apply to both I and Q when **IQ Separate Graphs** is selected.

IQ Polar Display

When **View IQ Polar** is selected, the IQ Polar Display menu is enabled, allowing you view I and Q traces on a polar plot.

Graticule Visible hides or displays the graticule.

Autoscale, when selected, scales the I and Q signal magnitudes to the peak value. When it is deselected, you can set the values manually using the IAxis Range (\pm) and QAxis Range (\pm) controls above the display.

Capture

By default, the module captures data to the screen (**To Screen Only**), but you can also capture results to ASCII or binary files whilst continuing to display on screen (**To ASCII File and Screen; To Binary File and Screen**).

File Setup... opens a browser to define a file extension (default is *.txt*) and location for storing data. Files are saved as interleaved I/Q pairs (I followed by Q) or single IF data, depending on the setting of the [Sample Data Type](#) field.

- ASCII IQ file: I and Q values are on new lines, I value followed by Q value.
- Binary IQ file (16-bit mode): I and Q values are stored as 16-bit integers, I value followed by Q value.
Binary IQ file (32-bit mode): I and Q values are stored as 32-bit integers, I value followed by Q value.

Help

Instrument Information provides the module's PXI resource code and serial number, revision numbers for driver, FPGA and PCI, and its last calibration dates.

About provides the version and date of the soft front panel.

Boot

Click **Boot** to initialize the module and view the Boot Resource window. Resources available for initializing are shown in blue.

Select the 3030A you want to boot.

Boot default FPGA configuration box.

Check this. Do not change the configuration unless you are advised otherwise.

EEPROM caching box.

Check this, so that when you boot a particular module for the first time, calibration data is read from the module and placed in the local cache that you define in the EEPROM Cache Path. This initial boot time is of the order of 1 to 2 minutes. Then check the EEPROM caching box at subsequent power-ups of this module to provide considerably faster boot times. The EEPROM caching box is cleared at each power-down.

Click **OK**. While you select the boot resource, the indicator is amber. Once the module has initialized, the indicator changes to green in a few seconds.

If no calibration data is available, the driver returns a caution. If this happens, return the module for calibration.

s/n:

After the module initializes, this field displays its serial number.

Res:

After the module initializes, this field displays its VISA resource string.

Input source

Set this to RF or IF depending on which input is used (IF IN or RF IN). Apply IF or RF signals to the appropriate input connector. If the signal is RF, the module downconverts it and provides attenuator configuration and filtering options (see [Input conditioning](#)). RF frequency settings/input level or IF input level controls are enabled, depending on which is selected, and unused controls are grayed out.

RF tuning

RF Channel

Sets the currently active channel in a range of 0 to 127.

Chan List

Click this to set up the channels for [list mode operation](#). You can [Load](#) and [Save](#) the settings file to make setup easier.

RF Freq (Hz)

This is the RF input frequency. This defines the center frequency of the FFT trace and selects appropriate correction values.

The module is tuned by setting the RF frequency and the LO offset direction (above or below). From these two values, the module calculates the LO frequency that must be applied to the LO input.

Set the input frequency using the up/down arrows or by entering the frequency in Hz or scientific (e) notation, in the range 330 MHz to 3.0 GHz.

LO Position

Displays the local oscillator position relative to the RF frequency.

Set to Above to make the LO higher than the RF, and to Below to make the LO lower than the RF. For some frequencies, LO Position is fixed and cannot be changed.

LO Freq

Shows the frequency to which a 3010 Series RF synthesizer module or other source should be set in order to provide the correct LO frequency for the 3030A. If you are using a 3010 Series module, simply double-click on the field, copy the value, and paste it into the RF Frequency (Hz) field on the 3010 Series module's soft front panel.

External Reference

Lock to 10MHz causes the ADC clock to lock to the 10 MHz reference connected to the 10 MHz I/O connector. **Free Run** causes the ADC clock to free run at the center of its range, at a nominal frequency of 103.68 MHz. **PCI Backplane** causes the ADC clock to lock to the 10 MHz reference from the PCI backplane.

Input conditioning

You may find the [block schematic diagram](#) (Fig. 4-1) helpful in understanding these features.

RF Input Level (dBm)

Set this to the peak level of the input RF signal to insure the best dynamic range and signal-to-noise ratio in Auto Atten Config mode. Grayed out when Input Source is set to IF.

Set the RF input level using the up/down arrows or by entering the level, in the range –99.99 to +22.00 dBm in Auto Atten Config mode. In Auto IF or Manual Atten Config mode, this value is not used but the maximum value is capped to +2 dBm.

***Note:** when the RF input attenuation is 8 dB or more and IF attenuation is 2 dB or more, the module can accept an input level of +22 dBm peak. For any setting below 8 dB RF attenuation, the maximum safe input reduces to +16 dBm peak with 4 dB or more IF attenuation.*

IF Input Level

Set this to the peak level of the input signal to insure the best dynamic range and signal-to-noise ratio. Grayed out when Input Source is set to RF.

Set the IF input level using the up/down arrows or by entering the level, in the range –99.00 to +17.00 dBm for full scale on the digitizer.

***Note:** the maximum safe input with 0 dB IF attenuation is +10 dBm.*

Step size: double-click on the step value under the IF Input Level field to set up the size of RF and IF level step.

RF Atten

Sets the RF attenuator value, which changes the input level to the mixer. This value can only be adjusted manually if Atten Config is set to Manual or Auto IF.

Set the RF attenuator level using the up/down arrows or by entering the level, in the range 0 to +28 dB, in 4 dB steps.

IF Atten

Sets the IF attenuator value, which changes the input level to the ADC. This value can only be adjusted manually if Atten Config is set to Manual.

Set the IF attenuator level using the up/down arrows or by entering the level, in the range 0 to +35 dB in 1 dB steps.

Input Level Dimensions

Establishes the measurement units as dBm, dB μ V, dBmV, dBV, V or mW.

Atten Config

Auto	the RF input level set is used to optimize RF and IF attenuator gain settings automatically.
Auto IF	you have manual control of RF attenuation but the IF attenuator setting is automatically set by the driver.
Manual	you have complete control over the settings of the RF and IF attenuators; the driver ignores the set RF input level.

Filter Bypass

When enabled, causes the anti-aliasing filter to be bypassed, allowing signals outside its passband to reach the ADC. Level calibration is maintained. Allows you to observe spuri and other signals within the module's bandwidth that would otherwise be removed by the filter.

ADC Overload (LED)

Indication is red if the ADC was overloaded during the last acquisition.

ADC Overload Level

Indicates the RF/IF input level that could cause ADC Overload error. The displayed overload level is clamped to the safe input level.

Remove DC Offset

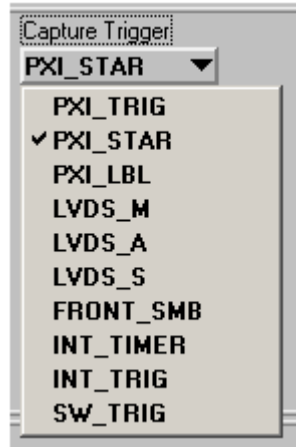
Removes the DC component from captured IF or IQ data. Removes DC components at the edge of the span at full and/or $\frac{1}{2}$ sample rate.

***Note:** if DC (but no signal) is present on the input, a sawtooth waveform is displayed on I and Q time series screens.*

Acquisition & triggering

Capture Trigger

Allows you to select the trigger source from a drop-down list:



Software trigger

- **SW_TRIG**

This is a non-triggered capture mode. Click on **Start** to capture samples (defined by Number of Samples) when in Single/Repeat mode, without waiting for any external event. Click **Stop** to end the capture.

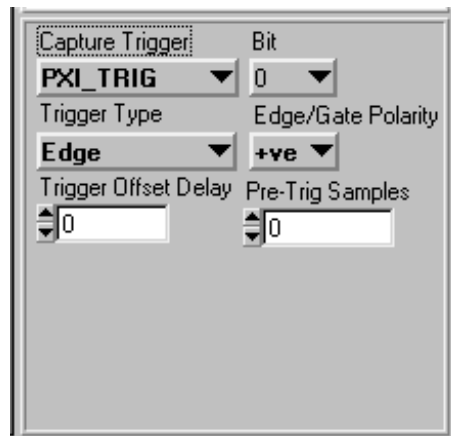
Hardware triggers

Remaining triggers on the drop-down list are hardware triggers. When any of these is selected, triggering is dependent on trigger events, including the correct arming of the trigger.

The module ignores triggers that occur during the sample capture.

Refer to the [help files](#) for full details.

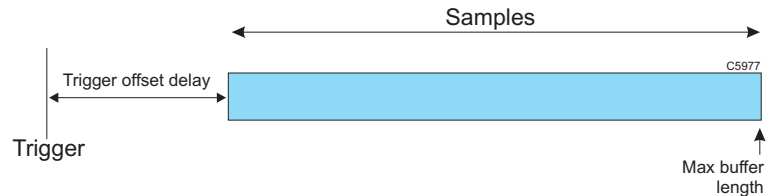
Most of the hardware triggers share a common triggering interface:



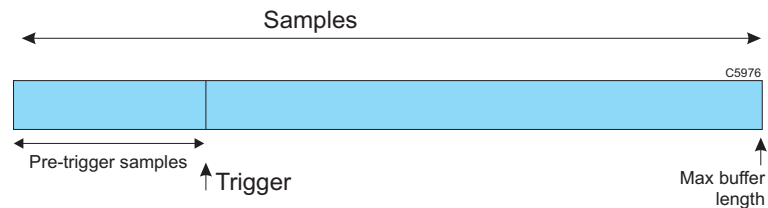
The screenshot shows a configuration window for hardware triggers. It contains the following controls:

- Capture Trigger:** A dropdown menu with **PXI_TRIG** selected.
- Bit:** A dropdown menu with **0** selected.
- Trigger Type:** A dropdown menu with **Edge** selected.
- Edge/Gate Polarity:** A dropdown menu with **+ve** selected.
- Trigger Offset Delay:** A numeric input field with the value **0**.
- Pre-Trig Samples:** A numeric input field with the value **0**.

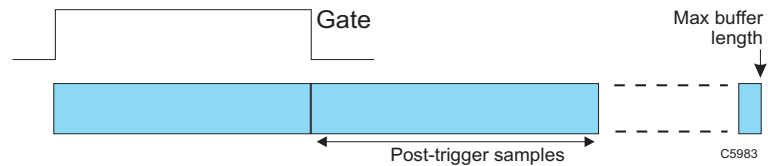
Trigger Type	Set to Edge or Gate.
Edge/Gate Polarity	set +ve or -ve
Trigger Offset Delay	Delays the trigger by a specified number of output sample periods.



Pre-Trig Samples (Edge trigger type)	Sets the number of pre-trigger samples present in the captured data buffer. Increase this value to move the position of the trigger point in the captured data further from the start.
---	--



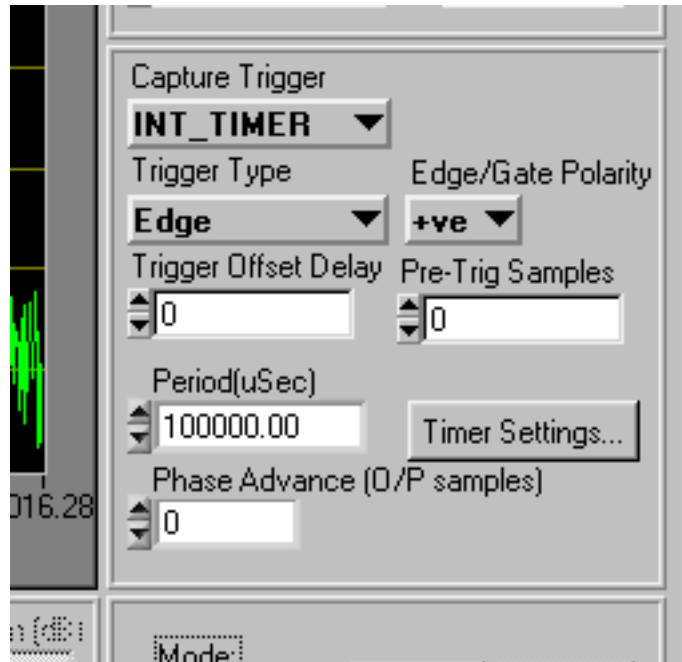
Post-Trig Samples (Gate trigger type)	Sets the number of post-trigger samples present in the captured data buffer.
--	--



- **PXI_TRIG** [0–7]
Takes its trigger input from any one of 8 bits of the PXI trigger bus that is common to all modules in the chassis.
- **PXI_STAR**
Takes its trigger input from a module that has ST functionality and is fitted in PXI slot 2.
- **PXI_LBL** (Local Bus Left) [0–12]
Takes its trigger input from the slot to the left of the 3030A (viewed from the front panel), using the PXI local bus. Choose from any of 13 bits for the trigger; this bus is common only to the 3030A and the module to its left.
- **LVDS_M** [1–4]
Takes its trigger from any of four Marker bits on the DATA connector. Ensure that Settings/LVDS/Marker Mode is set to Input.
- **LVDS_A** [0–4]
Takes its trigger from any of five Auxiliary input bits on the DATA connector. Ensure that Settings/LVDS/Auxiliary Mode is set to Input.
- **LVDS_S**
Takes its trigger from the Spare 0 input bit on the LVDS data bus. Ensure that Settings/LVDS/Data Mode is set to Input. Because the data bus is set to receive when this trigger is used, it is not then possible to output data on the DATA connector.
- **FRONT_SMB**
Takes its trigger from the TRIG connector on the module's front panel.

- **INT_TIMER**

Takes its trigger from the internal timer. This timer trigger can also be routed to other modules using the [routing matrix](#). Similarly, this timer can be synchronized with the external signal connected to the TIMER_SYNC signal in the routing matrix.



Click **Timer Settings...** to display the Timer Settings screen (Fig. 3-6).

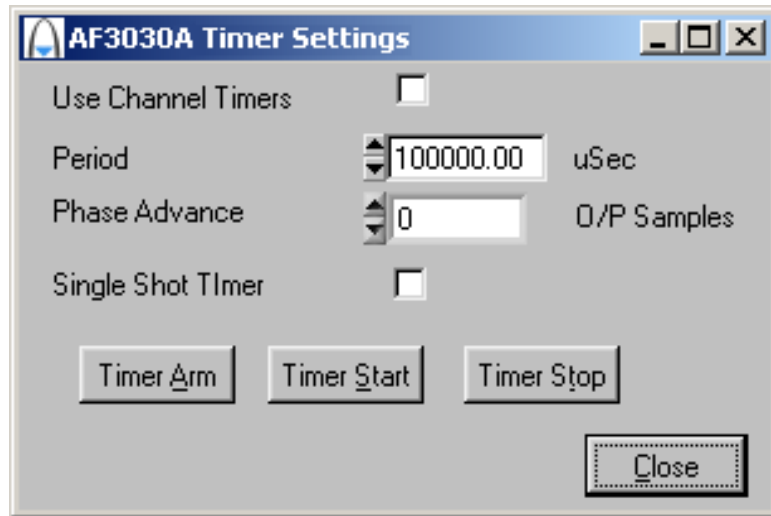


Fig. 3-6 Timer settings

Channel Timer Mode

When checked, lets you use a different timer period for each channel. The timer period is determined by the active channel's Period (see below), and applies while that channel is active. This mode is useful in setting up variable dwell list mode.

The channel timer period is measured in number of output samples, so changes if the sample rate changes. When the channel changes, the timer restarts, using the period set for that channel.

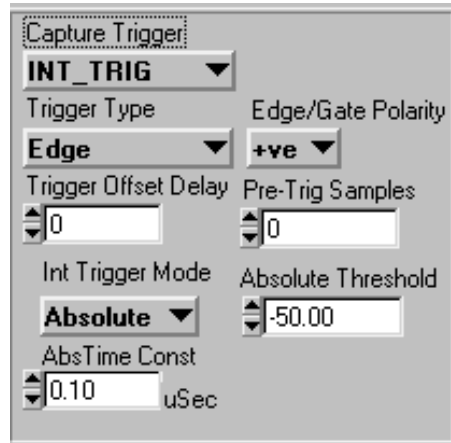
If Channel Timer Mode is disabled, the timer period becomes the common timer period, specified in μs . This timer period stays the same irrespective of which channel is active, and does not restart when the channel changes.

Period	Sets the period of the active channel (in number of output samples) if Channel Timer Mode is enabled. Otherwise, sets the common timer period in μs . Mark/space ratio in either mode is 50%.
Phase Advance	Adjusts the phase of the internal timer signal in multiples of the output sample clock period. Allows you to synchronize the timer trigger with an external signal. Not available if Channel Timer Mode is enabled.
Timer <u>A</u> rm	Arms the timer so that an external signal connected to TIMER_TRIG in the routing matrix triggers the timer (rising edge).
Timer <u>S</u> tart	Starts the timer if it was stopped, otherwise ignored if the timer is already running. Initial state of timer is 'High'.
Timer <u>S</u> top	Stops the timer if it is running, and disarms the timer trigger. Once the timer is stopped, an external signal cannot start it without re-arming it.

Settings for Period and Phase Advance (in common timer mode only) appear on the [front panel](#) as well as on the Timer Settings screen.

- **INT_TRIG**

Takes its trigger from the internal level trigger.



The screenshot shows a configuration window titled "Capture Trigger:". It contains several settings for the INT_TRIG trigger:

- Capture Trigger:** A dropdown menu set to "INT_TRIG".
- Trigger Type:** A dropdown menu set to "Edge".
- Edge/Gate Polarity:** A dropdown menu set to "+ve".
- Trigger Offset Delay:** A numeric input field set to "0".
- Pre-Trig Samples:** A numeric input field set to "0".
- Int Trigger Mode:** A dropdown menu set to "Absolute".
- Absolute Threshold:** A numeric input field set to "-50.00".
- AbsTime Const:** A numeric input field set to "0.10", followed by the unit "uSec".

Int Trigger Mode	<p>Select the internal level trigger mode: Absolute/Relative</p> <p>Absolute: the digitized signal is filtered using an absolute time constant. An internal level trigger is generated when the level of this filtered signal exceeds the absolute level trigger threshold (specified in dBm). The absolute time constant and level settings may affect the trigger delay.</p> <p>Relative: the digitized signal is filtered using both a fast and a slow time constant. For a step level change, the amplitude difference between the two resultant filtered signals produces a pulse, its duration and level determined by the difference between the fast and slow time constants. The pulse is then compared with the 'relative threshold trigger level' to create the internal trigger. Fig. 3-7 shows this.</p> <p>When the relative threshold trigger level is entered as positive, the difference signal = (fast signal – slow signal). When relative threshold trigger level is entered as negative, the difference signal = (slow signal – fast signal).</p> <p>Only +ve Trigger Edge/Gate Polarity is available when using relative mode.</p>
AbsTime Const	Sets the time constant for the absolute level internal trigger.
Absolute Threshold	Sets the absolute threshold level in dB.
Slow/Fast Time Const	Sets the slow and fast time constants used in relative internal trigger mode.
Relative Threshold	The threshold value (dBm) compared with the difference signal filtered using Relative Slow and Fast Time Constants.

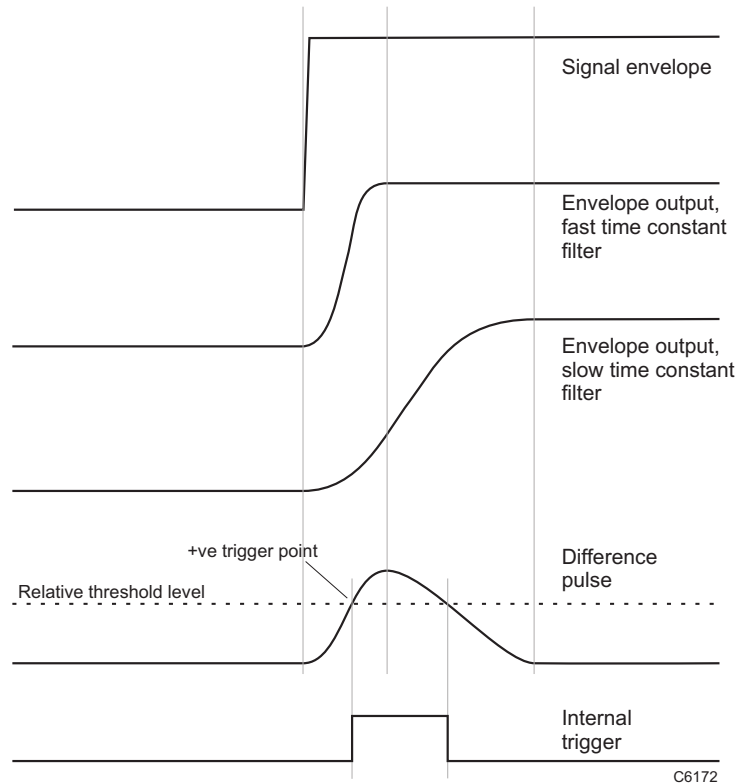


Fig. 3-7 Relative internal level trigger mode

Trigger mode and control

Mode:

Selects **Single**-shot or **Repeat** data capture.

Use with the **Start** and **Stop** buttons to initiate and stop data capture.

The indicator shows the status of the trigger or capture: green when waiting for a trigger or capturing, gray when idle.

IF/IQ data format

Sample Data Type

Select IQ or IF sample data type.

- IQ Sample Data: output sample rate is determined by the Modulation Mode and Decimation Ratio
- IF Sample Data: output sample rate is fixed at 103.68 MHz

Modulation Mode

(IQ data format only). Sets the digital modulation mode. Select from Generic, UMTS, GSM, CDMA2000 1X or 2319 Emulation.

The sample rate varies, depending upon modulation mode and decimation ratio:

- Generic: user-defined. Use this mode to create or emulate any modulation scheme.

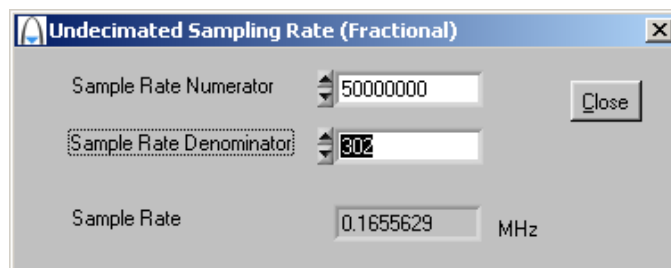
Enter any Undecimated Sample Rate in the range 6328.125 Hz to 85 MHz (PCI transfer) or 51.84 MHz (LVDS transfer) with a Generic Decimation Ratio of 1.

Alternatively, enter a different Generic Decimation Ratio and scale the Undecimated Sample Rate accordingly.

The resultant sample rate is shown in the Decimated Sample Rate box.

or

define a fractional rate by setting the numerator and denominator. Click on the button adjoining the Undecimated Sample Rate box to open the popup panel and enter a fractional sample rate:



Pre-defined rates:

- UMTS data mode: $61.44 \text{ MHz}/2^N$ (where $N = 1$ to 10)
- GSM resampled IQ data mode: $13 \text{ MHz}/(3 * 2^N)$, where $N = 0$ to 4 ($2^{(4-N)}$ times symbol rate of $13 \text{ MHz}/48$)
- CDMA2000 1X resampled IQ data mode: $9.8304/2^N$, where $N = 0$ to 3 ($2^{(3-N)}$ times chip rate of 1.2288 MHz)
- 2319 emulation mode: $65.28/2^N$, where $N = 4$ or 5 .

Decimation Ratio (Generic/GSM/UMTS/CDMA2000 X1/2319E)

(IQ data format only) Select a decimation ratio, dependent on the modulation mode:

GENERIC	2^n where $n = 0$ to 14 (max)
GSM	2^n where $n = 0$ to 4
UMTS	2^n where $n = 1$ to 10
CDMA2000 1X	2^n where $n = 0$ to 3
2319E emulation	2^n where $n = 4, 5$

See [Data timing](#).

Undecimated Samp Rate (MHz)

Displays the internal undecimated sampling rate before division by the decimation ratio.

GENERIC	max 85.00 MHz	
UMTS	61.44 MHz	= 3.84 MHz (3GPP chip rate) x 16
GSM	4.3333 (rec.) MHz	= 270.8333 (rec.) kHz (GSM bit rate) x 16
CDMA2000 1X	9.8304 MHz	= 1.2288 MHz (CDMA2000 chip rate) x 8
2319E	65.28 MHz	= 3.84 MHz (3GPP chip rate) x 17
IF	103.68 MHz	

IQ Data Output Format

Select 16- or 32-bit, subject to the modulation mode and decimation ratio chosen.

Sample rates

Modulation	Decimation ratio	IQ sample rate (Msymbol/s)	IQ data format
GENERIC	2^n	variable	16 (when Output Sample Rate > 12.96 MHz)
	where n = 0 to 14 (max)		16/32 (when Output Sample Rate <= 12.96 MHz)
UMTS	2	30.72	16
	4	15.36	16
	8	7.68	16/32
	16	3.84	16/32
	32	1.92	16/32
	64	0.96	16/32
	128	0.48	16/32
	256	0.24	16/32
	512	0.12	16/32
GSM	1024	0.06	16/32
	1	4.33333	16/32
	2	2.16666	16/32
	4	1.08333	16/32
	8	0.541667	16/32
	16	0.270833	16/32
CDMA2000	1	9.8304	16
	2	4.9152	16
	4	2.4576	16
	8	1.2288	16/32
2319E	16	4.08	16/32
	32	2.04	16/32

Window Function

Defines the window used by the FFT. 5-term Aeroflex gives good noise performance and side-lobe suppression at the expense of a wider main lobe, optimal for ACPR measurements.

Decimated Samp Rate (MHz)

Displays the result of the undecimated sampling rate divided by the decimation ratio.

Number of (IF/IQ) Samples

The name of the field changes to reflect the sample type selected.

Sets the sample size (number of samples to be captured), up to 32×10^6 IQ pairs with 32-bit storage, 64×10^6 IQ pairs with 16-bit storage, or 128×10^6 IF samples.

FFT Length

Varies with number of IF/IQ samples set. Minimum 16, maximum 2048.

List mode operation

Introduction

List mode operation associates a list address with a particular RF setup (channels 0–127). When the module is set to list mode operation, a new address, when strobed in, causes the module to change to the RF setup (channel) associated with that address.

List mode operation facilitates fast channel hopping during, for example, testing of transmitter/receiver modules where numerous different RF level and frequency settings are needed. A seven-bit list address selects the channel. A strobe signal, internally or externally generated, then causes the instrument to switch between channels as required. Flexibility is provided to allow channel hopping using a variety of control sources.

List addresses for list mode operation can be provided manually, or from an external source via the signal routing matrix (providing access to backplane bus, LVDS and other address sources), or from an internal sequential counter. The strobe signal that changes the list address can be sourced externally via the routing matrix, or internally.

Channel List

Click **Chan List** on the soft front panel to display individual channel list settings (Fig. 3-8). This is where you define channel setup for list mode operation.

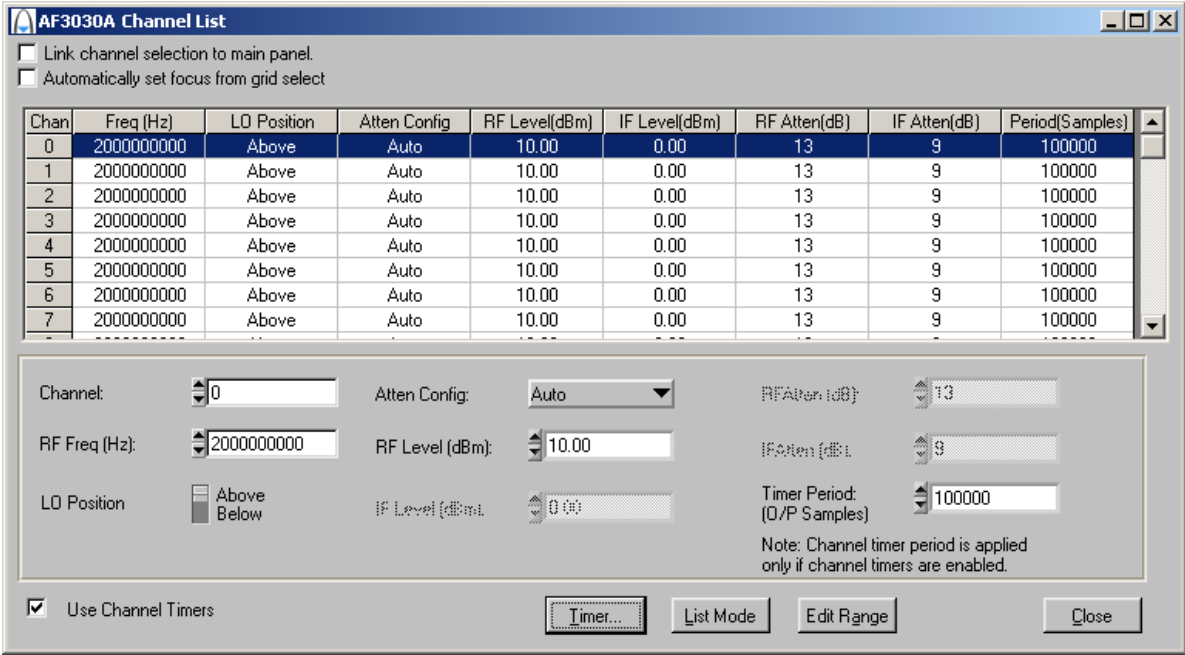


Fig. 3-8 Edit channel list settings

Edit individual channel parameters by selecting the specific channel. Channel parameters are:

- Freq (Hz)
- LO Position
- Atten Config
- RF Level (dBm)
- IF Level (dBm)
- RF Atten (dB)
- IF Atten (dB)
- Period (μ s/output samples)

Select the channel to be edited either by changing the channel number on the panel or by clicking on the corresponding channel row in the channel list.

If you check the **Link channel selection to main panel** box, changing the channel number on this panel makes it become the active channel on the soft front panel.

Check the **Automatically set focus from grid select** box to make the associated channel parameter field active when you click on a channel parameter in the grid.

Check the **Use Channel Timers** box to use the active channel's period as the timer period for that channel. If the box is unchecked, the common timer period (measured in μ s) applies to all channels. See [Timer Settings](#).

Click **T**imer... to display the [Timer Settings](#) screen.

Click **E**dit **R**ange to display the Edit Channel Range screen (Fig. 3-9), which lets you apply changes to a set of channels simultaneously, speeding up channel setup.

Define start and finish values for address numbers in the **Chan range, from:** and **to:** fields.

Insert values and click **S**et for each field. You are asked to confirm each action. When finished, click **C**lose to return to the Channel List screen.

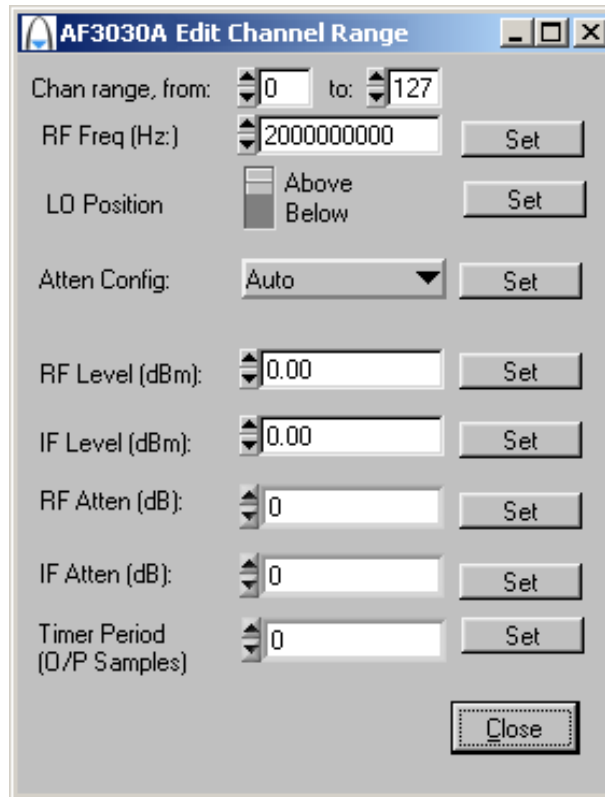


Fig. 3-9 Edit all channel settings

Click **List Mode** to display the [List Mode Settings](#) screen, which lets you set up addressing and strobing, and the internal counter.

List Mode Settings

Click **List Mode** on the Channel List screen to display the List Mode Settings screen. From here, you can define the list address source, and how the strobe (internal or external) that actions a new list address is handled. You can also set up the internal sequential counter and the timer that drives it.

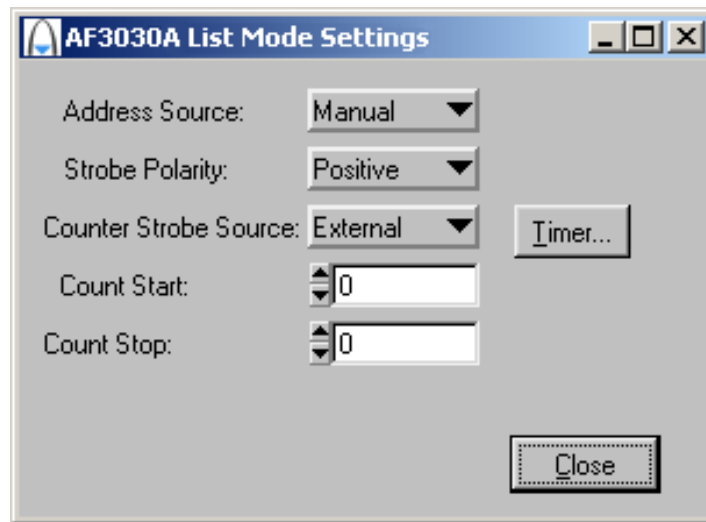


Fig. 3-10 Edit list mode settings

Address Source

Defines the source from which the seven-bit-wide list address is obtained.

Manual: RF list addresses are register-driven values, manually controlled by setting the **RF Channel**.

External: RF list addresses are sourced from the [signal routing matrix](#) (Fig. 3-4) on the strobe signal connected to LIST_STB.

Counter: RF list addresses are sourced from the internal sequential counter.

Strobe Polarity

Defines whether a positive- or negative-going edge is active for the strobe signal.

Counter Strobe Source

Defines the method used to sequence the internal List Counter register, when Address Source is set to Counter. When sequenced, the resulting change of address (the count value) automatically causes an internal strobe signal to be generated, which actions the new list address.

External: an external strobe, sourced from the signal routing matrix (Fig. 3-3), causes the counter to count up or down, providing a new list address.

Timer: the counter strobe signal is generated periodically by an internal timer, whose period is set by Timer Dwell.

Counter Start

Defines the start address of the list counter. If this value is less than the value of Counter Stop, the counter increments; otherwise it decrements. Setting this value also resets the list count to the next start address.

Counter Stop

Defines the stop address of the list counter. If this value is greater than the value of Counter Start, the counter increments; otherwise it decrements. Setting this value also resets the list count to the next start address.

Timer Dwell

Defines the period of the list timer, in units of 0.1 μ s. The range is 1 μ s to 600 s.

Timer...

Click to display the [Timer Settings](#) screen.

Driver export functions

On-line help and functional documentation for driver export functions are available on the CD-ROM supplied with your module. They are installed onto your computer at the same time as the drivers.

Driver installation folder

Find help and functional documentation in the driver installation folder on your computer. This is typically:

C:\vxipnp\winnt\af3030

Help

Within the driver installation folder are help files that provide detailed descriptions, parameter lists and return values for all available functions. Help files are provided in three formats:

<i>af3030.doc</i>	3030 Series function documentation	Text file
<i>af3030.hlp</i>	3030 Series Visual BASIC function reference	} Windows Help file format
<i>af3030_C.hlp</i>	3030 Series C language function reference	

We recommend that you use the C or Visual Basic formats, as these are easier to navigate.

The file opens at the Contents page:

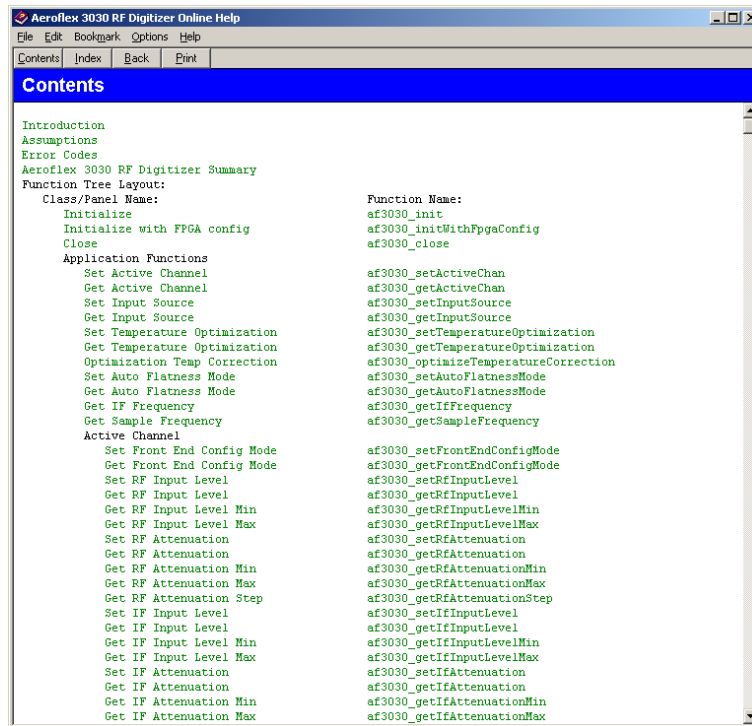


Fig. 3-11 Online help contents — example

Hyperlinks from here take you to

[Introduction](#)

[Assumptions](#)

[Error codes](#)

[Functions listings](#)

Functions listings

Functions are grouped by type. Click on the hyperlink for details of the function. Each function has a description of its purpose, and may have a list of parameters and return values.

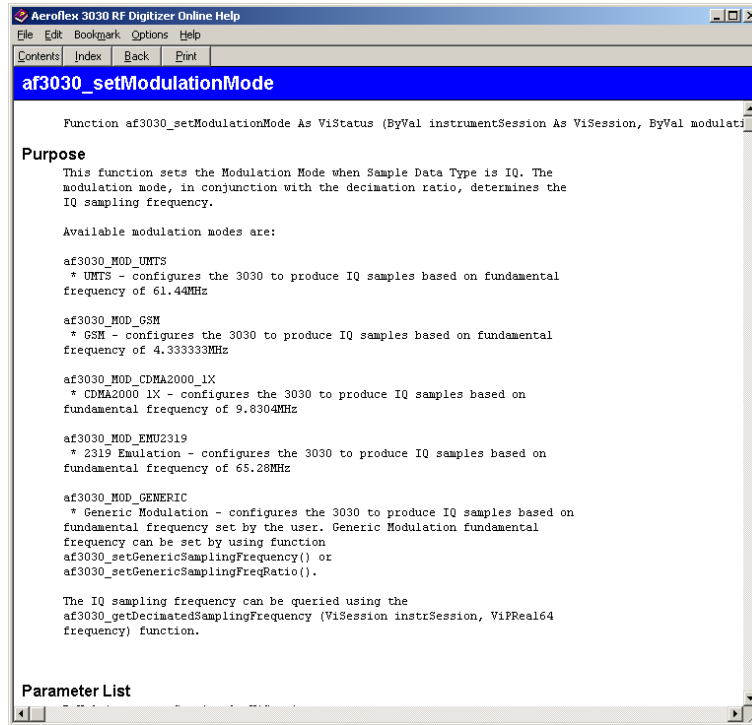


Fig. 3-12 Function description — example

RF digitizer using 3010/3011 and 3030A

Refer to *3000 Series PXI Modules Installation Guide for Chassis* (part no. 46882/667) and *PXI Studio User Guide* (part no. 46892/809), both supplied on the CD-ROM with the module, for detailed information on creating a fully functional RF digitizer using the 3030A and 3010/3011 together. The afDigitizer dlls and PXI Studio application combine the functions of the individual modules to provide a single interface with the appearance and functionality of an integrated instrument.

Appendix A

DATA connector and timing

The DATA connector is a 68-way female VHDCI-type LVDS (low-voltage differential signaling) interface. It can be used to output data and associated control and timing signals.

The DATA connector is shown in Fig. A-1. LVDS data conforms to ANSI/TIA/EIA-644.

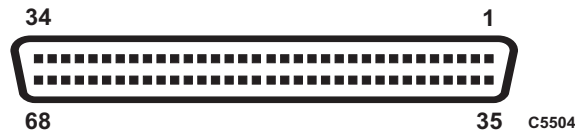


Fig. A-1 DATA connector (looking onto front panel)

The DATA interface provides:

- output of IF or IQ data
- input/output of triggering, List Mode and Timer signals
- clock.

The electrical level is LVDS: V_{OH} typically 1.38 V, V_{OL} typically 1.03 V

DATA CONNECTOR AND TIMING

Table A-1 DATA pin-out

Contact	Function	Contact	Function
1	AUX0-	35	AUX0+
2	AUX1-	36	AUX1+
3	AUX2-	37	AUX2+
4	SPARE1-	38	SPARE1+
5	SPARE2-	39	SPARE2+
6	CLK_IN-	40	CLK_IN+
7	GND	41	GND
8	CLK_OUT-	42	CLK_OUT+
9	D0-	43	D0+
10	D1-	44	D1+
11	D2-	45	D2+
12	D3-	46	D3+
13	D4-	47	D4+
14	D5-	48	D5+
15	D6-	49	D6+
16	D7-	50	D7+
17	D8-	51	D8+
18	D9-	52	D9+
19	D10-	53	D10+
20	D11-	54	D11+
21	D12-	55	D12+
22	D13-	56	D13+
23	D14-	57	D14+
24	D15-	58	D15+
25	IQSELECT_OUT-	59	IQSELECT_OUT+
26	IQSELECT_IN-	60	I/QSELECT_IN+
27	SPARE0-	61	SPARE0+
28	GND	62	GND
29	MARKER1-	63	MARKER1+
30	MARKER2-	64	MARKER2+
31	MARKER3-	65	MARKER3+
32	MARKER4-	66	MARKER4+
33	AUX3-	67	AUX3+
34	AUX4-	68	AUX4+

Data format

The data output to the DATA interface is real-time. I Data is output using a 103.68 MHz clock (but bursted using IQSELECT to achieve the correct average sample rate).

D0-D15 (Sample DATA) in Output Mode	<p>Sample Data Output Format:</p> <p>16-bit IQ: 2 x D[15:0], I followed by Q, D[0]=LSB.</p> <p>32-bit IQ: 4 x D[15:0] in order I MSW, I LSW, Q MSW, Q LSW, D[0]=LSB.</p> <p>IF data: there are two configurations:</p> <p>Upper 14 bits: D[15:2], D[2]=LSB (default mode)</p> <p>Lower 14 bits: D[13:0], D[0] = LSB, D[15:14] sign extended from D[13].</p>
IQSELECT_OUT	<p>Specifies content of D0-D15 in output mode when sample data format is IQ. IQSELECT=1 for rising CLK_OUT indicated I data on D0-D15. First IQSELECT transition to '0' from '1' on the rising edge of CLK_OUT indicates start of the Q data. In 16-bit mode, Q data is valid for one clock whereas in 32-bit mode, Q data is valid for two clocks after IQSELECT changes to 0. Note that IQSELECT stays 0 even if Q data is transferred. Thereafter, Q is indeterminate until IQSELECT_OUT goes positive to define a new IQ pair.</p> <p>IQSELECT_OUT stays =0 at all times in IF mode.</p>
CLK_OUT	Output clock signal.

Data timing

Data transmission for generic modulation mode

In this mode, IQ data is resampled to produce IQ data in the range $51.84 \text{ MHz}/2^N$, where $N = 0$ to 13. Example timing relationships between data rate and clock frequency for the DATA interface are shown in Fig. A-2 and Fig. A-3. IQSEL_OUT is toggled only when an IQ data pair is being transmitted. Note that the CLK_OUT signal is continuous and that the frequency of the clock remains fixed at 103.68 MHz. In Fig. A-2, the chosen decimated data rate of 51.84 Ms/s means that the ratio of clock to data rate is 2. In Fig. A-3, it is a non-integer value, and only the Q value occupying the clock period that follows the falling edge of IQSEL_OUT is valid.

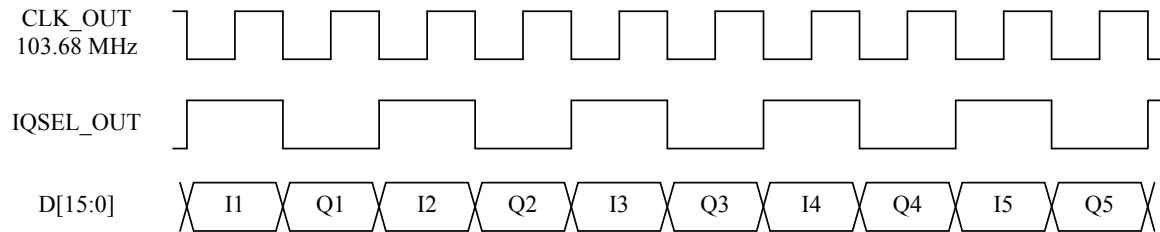


Fig. A-2 DATA timing for generic modulation in 32-bit IQ mode, integer relationship

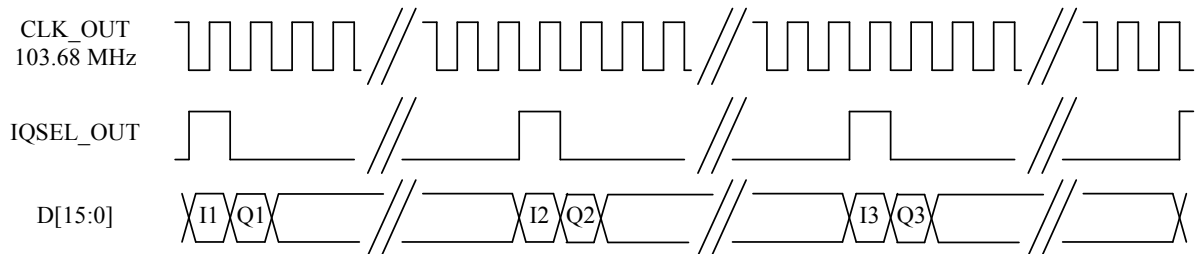


Fig. A-3 DATA timing for generic modulation in 16-bit IQ mode, integer relationship

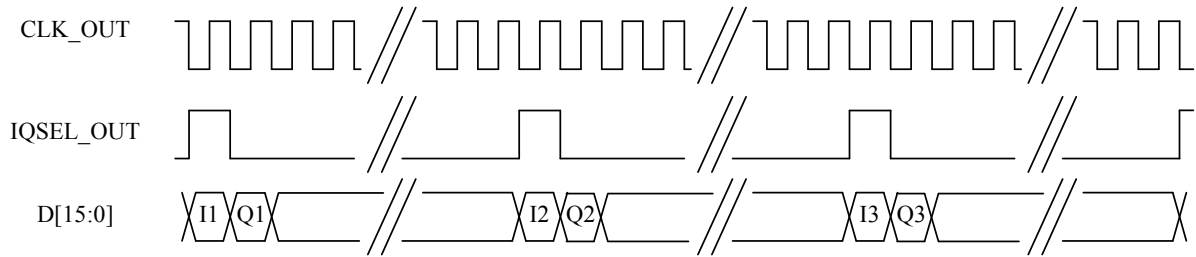


Fig. A-4 DATA timing for generic modulation in 16-bit IQ mode, non-integer relationship

Latency

The digitizer converts an analog RF waveform presented at its RF port into a series of digital IQ data pairs at its LVDS port. LVDS latency is the time taken for any given point on the input RF waveform to appear as an IQ data pair on the LVDS output. The table below lists the LVDS latency times for different example IQ sample rates.

Generic modulation (51.84 MHz)											
Decimation ratio	1	2	4	8	16	32	64	128	256	512	1024
Output sample rate (MHz)	51.84	25.92	12.96	6.48	3.24	1.62	0.81	0.405	0.2025	0.10125	0.050625
Total delay (μs)	1.32	1.76	2.55	4.13	7.14	13.16	25.19	49.27	97.42	193.71	386.31

Generic modulation (38.88 MHz)											
Decimation ratio	1	2	4	8	16	32	64	128	256	512	1024
Output sample rate (MHz)	38.88	19.44	9.72	4.86	2.43	1.215	0.6075	0.30375	0.151875	0.075938	0.037969
Total delay (μs)	1.41	1.99	3.04	5.15	9.16	17.19	33.24	65.34	129.54	257.93	514.72

Get LVDS Data Delay

To see the latency for any setup, use the function `af3030_getLvdsDataDelay`. This returns the delay in μs between RF/IF input and the corresponding LVDS data output at the LVDS connector for the current settings.

Data timing for UMTS modulation mode and decimation ratio of 2

The ADC in the module is clocked at a rate of 103.68 Ms/s. The module's soft front panel allows both the modulation mode and the decimation ratio to be selected. IQSELECT_OUT is toggled only when an IQ data pair is being transmitted. If UMTS is selected as the modulation mode and a decimation rate of two is selected, the IQ data rate is 30.72 Ms/s. The ratio of ADC clock rate to IQ sample rate is $\frac{103.68 \text{ MHz}}{30.72 \text{ MHz}} = 3.375$, a non-integer value that means that data is output sometimes on the 3rd clock pulse and sometimes on the 4th. Therefore the number of clock cycles between IQSELECT_OUT being asserted varies. When configured in this way, the timing relationships for the DATA interface are as shown in Fig. A-5.

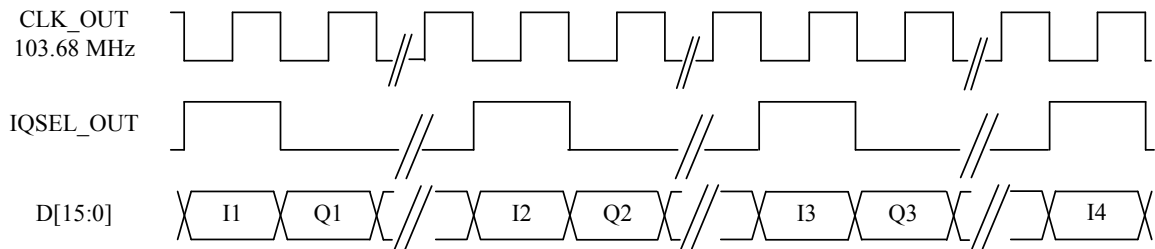


Fig. A-5 DATA timing for UMTS mode and decimate by 2 for 16-bit IQ

Latency

The digitizer converts an analog RF waveform presented at its RF port into a series of digital IQ data pairs at its LVDS port. LVDS latency is the time taken for any given point on the input RF waveform to appear as an IQ data pair on the LVDS output. The table below lists the LVDS latency times for different IQ sample rates.

UMTS (61.44 MHz)										
Decimation ratio	2	4	8	16	32	64	128	256	512	1024
Output sample rate (MHz)	30.72	15.36	7.68	3.84	1.92	0.96	0.48	0.24	0.12	0.06
Total delay (μs)	1.50	2.23	3.57	6.24	11.32	21.47	41.79	82.41	163.66	326.16

Data timing for UMTS modulation mode and decimation ratio of 4

The timing relationships for the DATA interface are as shown in Fig. A-6. The CLK_OUT signal is continuous and remains fixed at 103.68 MHz, irrespective of the modulation mode and the decimation rate. The ratio of ADC clock rate to IQ sample rate is

$\frac{103.68 \text{ MHz}}{15.36 \text{ MHz}} = 6.75$, a non-integer value that means that data is output sometimes on the 6th clock pulse and sometimes on the 7th. Therefore the number of clock cycles between IQSELECT_OUT being asserted varies. IQSELECT_OUT is toggled only when an IQ data pair is being transmitted.

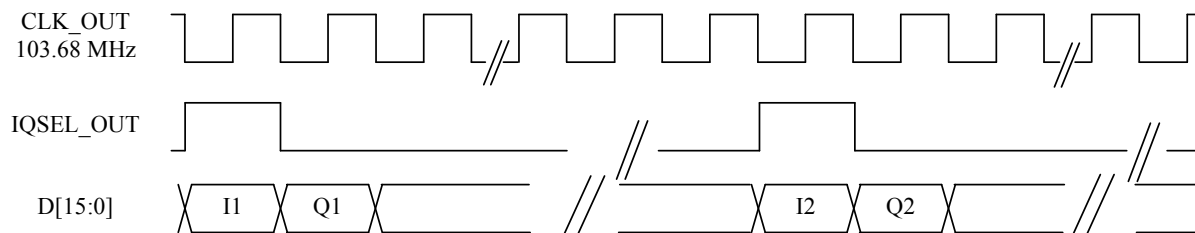


Fig. A-6 DATA timing for UMTS mode and decimate by 4 for 16-bit IQ

Data timing for UMTS modulation mode and decimation ratio of 8

The timing relationships for the DATA interface are as shown in **Error! Reference source not found.** The CLK_OUT signal is continuous and remains fixed at 103.68 MHz, irrespective of the modulation mode and the decimation rate. The ratio of ADC clock rate to IQ sample rate is $\frac{103.68 \text{ MHz}}{7.68 \text{ MHz}} = 13.5$. Therefore the number of clock cycles between IQSELECT_OUT being asserted varies. IQSELECT_OUT is toggled only when an IQ data pair is being transmitted.

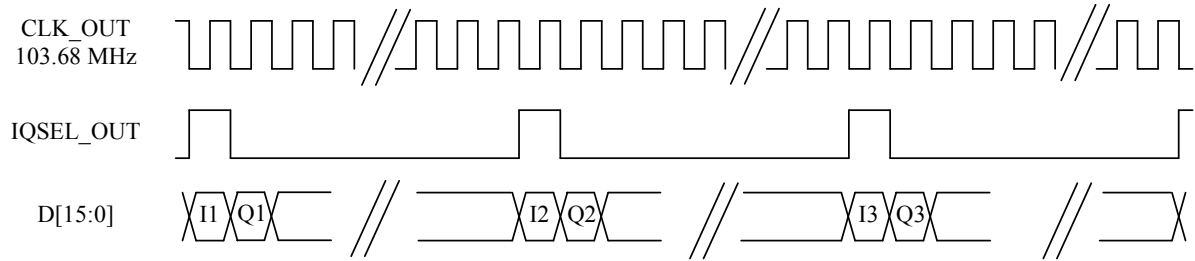


Fig. A-7 DATA timing for 16-bit IQ UMTS mode and decimate by 8

In 32-bit mode, data is transmitted as two 16-bit words, MSW then LSW for I then Q, as shown in Fig. A-7.

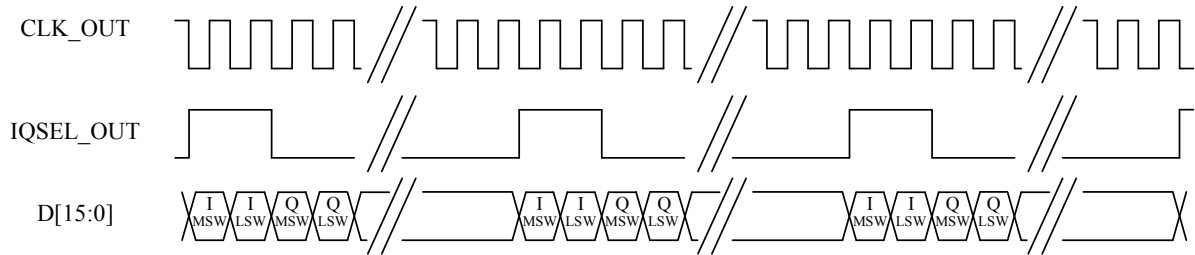


Fig. A-8 DATA timing for 32 bit IQ, UMTS mode and decimate by 8

Data timing for CDMA2000 1X modulation mode

If a modulation mode of CDMA2000 1X and a decimation value of 1 are both selected, IQ data is generated at eight times the CDMA2000 1X chip rate. As the chip rate is 1.2288 MHz, this gives an IQ sample rate of 9.8304 Ms/s. There is no longer an integer relationship between the clock rate of 103.68 MHz and the 9.8304 Ms/s data rate.

The number of clock cycles between IQSELECT_OUT being asserted is not fixed but varies. This is true for all CDMA mode decimation ratios.

The timing relationship for the DATA interface is shown in Fig. A-9. Note that the CLK_OUT signal is continuous and remains fixed at 103.68 MHz, irrespective of the modulation mode and the decimation rate. IQSELECT_OUT is toggled only when an IQ data pair is being transmitted.

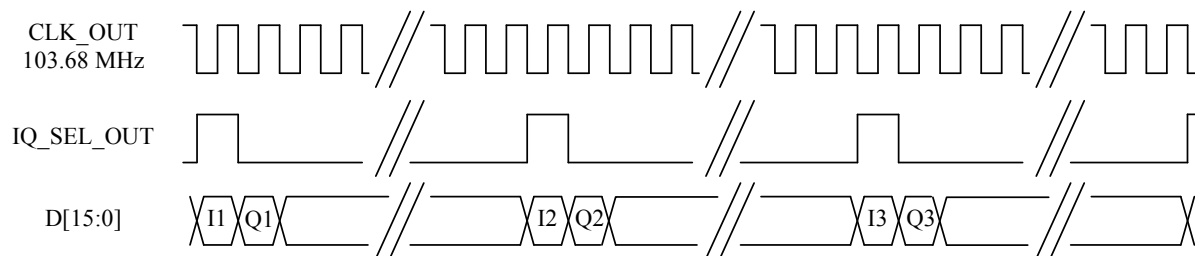


Fig. A-9 DATA timing for CDMA2000 1X

Latency

The digitizer converts an analog RF waveform presented at its RF port into a series of digital IQ data pairs at its LVDS port. LVDS latency is the time taken for any given point on the input RF waveform to appear as an IQ data pair on the LVDS output. The table below lists the LVDS latency times, calculated for different IQ sample rates.

CDMA2000-1x (9.8304 MHz)				
Decimation ratio	1	2	4	8
Output sample rate (MHz)	9.8304	4.9152	2.4576	1.2288
Total delay (μs)	3.02	5.11	9.07	17.01

Data transmission for GSM modulation mode and a decimation ratio of 1

In this mode the IQ data is resampled to produce IQ data at 16 times the GSM symbol rate of 270.83 kHz, that is, 4.333 Ms/s. The timing relationships for the DATA interface is as shown in Fig. A-10. Note that the CLK_OUT signal is continuous and that the frequency of the clock remains fixed at 103.68 MHz. IQSELECT_OUT is toggled only when an IQ data pair is being transmitted.

There is no integer relationship between the data rate of 4.33 MHz and the clock frequency of 103.68 MHz. Therefore the number of clock cycles between IQSELECT_OUT being asserted is no longer fixed but varies. This is true for all GSM mode decimation ratios.

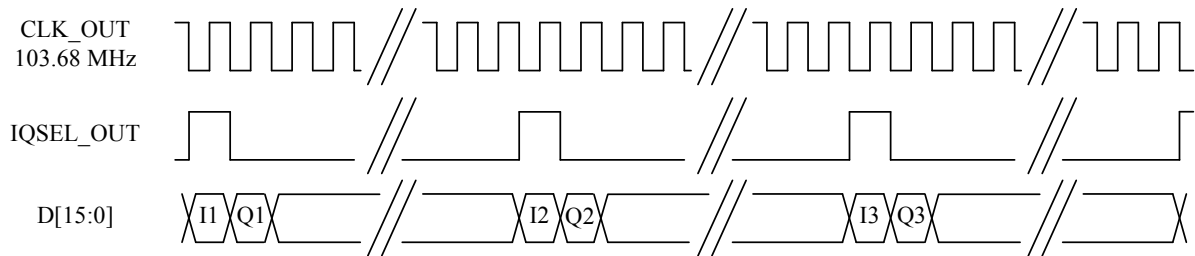


Fig. A-10 DATA timing for GSM for 16-bit IQ

Latency

The digitizer converts an analog RF waveform presented at its RF port into a series of digital IQ data pairs at its LVDS port. LVDS latency is the time taken for any given point on the input RF waveform to appear as an IQ data pair on the LVDS output. The table below lists the LVDS latency times, calculated for different IQ sample rates.

GSM (4.333333 MHz)					
Decimation ratio	1	2	4	8	16
Output sample rate (MHz)	4.333333	2.166667	1.083333	0.541667	0.270833
Total delay (μs)	5.65	10.15	19.15	37.15	73.15

Data transmission for 2319E emulation mode

In this mode, the IQ data is resampled to produce IQ data at 4.08 MHz with a decimation ratio of 16. The timing relationships for the DATA interface are as shown in Fig. A-11. Note that the CLK_OUT signal is continuous and that the frequency of the clock remains fixed at 103.68 MHz. IQSELECT_OUT is toggled only when an IQ data pair is being transmitted.

There is no integer relationship between the data rate of 4.08 MHz and the clock frequency of 103.68 MHz. Therefore the number of clock cycles between IQSELECT_OUT being asserted is no longer fixed but varies. This is true for all 2319E modulation mode decimation ratios.

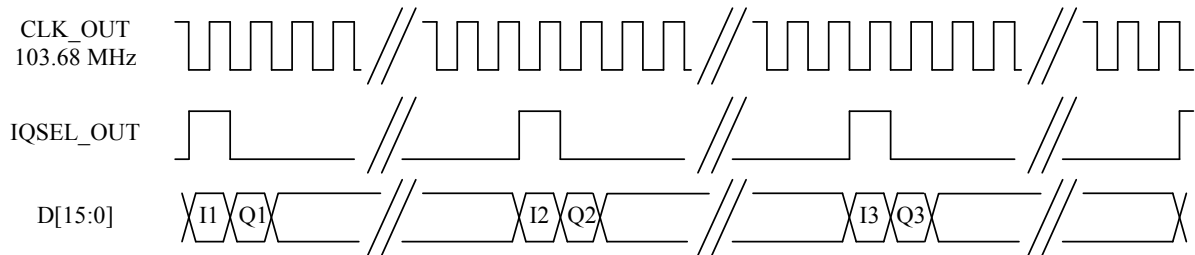


Fig. A-11 DATA timing for 2319 emulation for 16-bit IQ

Latency

The digitizer converts an analog RF waveform presented at its RF port into a series of digital IQ data pairs at its LVDS port. LVDS latency is the time taken for any given point on the input RF waveform to appear as an IQ data pair on the LVDS output. The table below lists the LVDS latency times, calculated for different IQ sample rates.

2319E emulation (65.28 MHz)		
Decimation ratio	16	32
Output sample rate (MHz)	4.08	2.04
Total delay (μs)	5.93	10.71

Data transmission in IF data format

In IF data format, the IQ_SELECT signal remains low and IF data is clocked on each ADC clock cycle at a fixed sample rate of 103.68 MHz.

Latency

LVDS latency in IF data format is the time taken for any given point on the input RF waveform to appear as IF data on the LVDS output.

IF (103.68 MHz)	
Total delay (μs)	0.81

Chapter 4 BRIEF TECHNICAL DESCRIPTION

Introduction

3030A is a PXI RF bandpass digitizer, digitizing an instantaneous IF bandwidth of 36 MHz with a 14-bit converter. Digitized RF can be stored in a large internal RAM and read back over PXI. It can also be streamed out of a front panel LVDS output at full speed. Flexible signal and trigger processing is available.

3030A can be operated as a spectrum analyzer, modulation analyzer, demodulator or part of a radio test set, by selecting the appropriate application software.

3030A is a three-board design occupying two slots in the backplane. The first board is a single stage RF downconverter to IF, with an input attenuator and output gain. It must be used with an external local oscillator (LO) from a 3010 Series RF Synthesizer module or other RF source. The IF output is normally linked externally to the second board, which digitizes the input IF signal. It has switchable input gain, an anti-alias filter with bypass and a clock source. It outputs data to the third board, which provides all of the digital services required by the module, including the power supply, PXI interface, LVDS interface, memory and digital signal processing. A [block schematic](#) for the instrument is shown in Fig. 4-1.

RF board

The input attenuator has three pads, which provide 2 dB of loss in the ‘thru’ condition, and 6, 10 and 18 dB of loss respectively in the ‘attenuate’ condition, giving 28 dB of control in 4 dB steps.

The RF synthesizer inputs a top octave of 1500 MHz to 3 GHz. This is amplified to provide level control, then split to the RF switch and to the dividers. It is divided down for frequencies below 1500 MHz. The signal is switched through up to two dividers in cascade and then amplified to +17 dBm before application to the mixer, which has an input frequency range of 330 MHz to 3 GHz.

The mixer is followed by a diplexing filter, which provides a good broadband match and low-pass filters the IF output, and a 10 dB gain amplifier. The loss of the mixer, its excess noise, the loss of the diplexing filter and the noise figure of the amplifier define the noise floor of the downconverter system.

IF board

The signal is input to an IF amplifier of adjustable gain. The IF amplifier consists of three 10 dB gain stages, with switchable pads. They provide a maximum gain of 30 dB, and a minimum gain of –5 dB.

The signal then enters an anti-alias bandpass filter, which passes signals at 75% of the digitizer sampling rate. This can be bypassed if required. The ADC sample rate is generated from a VCXO, which is phase locked to the 10 MHz signal relayed from the downconverter board. The ADC outputs are buffered and sent to the logic board.

Digital board

The logic board has several functions: an interface to the PCI bus, digital signal processing of IF data, data capture memory management, control of the LVDS data interface, and serial control of the digitizer and downconverter boards.

The PCI interface uses an FPGA, which boots up at power-on from flash memory, and which controls the logic on the board and in the rest of the module via serial links.

Another FPGA provides all of the signal processing hardware, and can be reloaded as the data processing is required to change. The data path from the ADC is first corrected for frequency response by an FIR filter. This corrects for the amplitude and group delay non-flatness created by the anti-alias filter. The data is then downconverted to I and Q using a complex mix, and decimated to a lower data rate consistent with the modulation bandwidth. Finally, the data is optionally resampled to another clock rate appropriate to the data rate of the modulation. Alternatively all processing can be bypassed to capture raw IF data.

A 64-bit memory module is used to capture data. The SDRAM controller allows continuous sample-rate capture of IQ or IF data being written into SDRAM, or 32-bit PCI burst transfers for reading data from SDRAM to controller memory. Simultaneous writing and reading of memory is not possible.

IF or IQ data can also be routed to an external LVDS data interface. This uses bidirectional transceivers for maximum flexibility, with clock in and out, 16-bit data, IQ select for multiplexed data, 4-bit markers, 5-bit auxiliary signals and spare lines.

BRIEF TECHNICAL DESCRIPTION

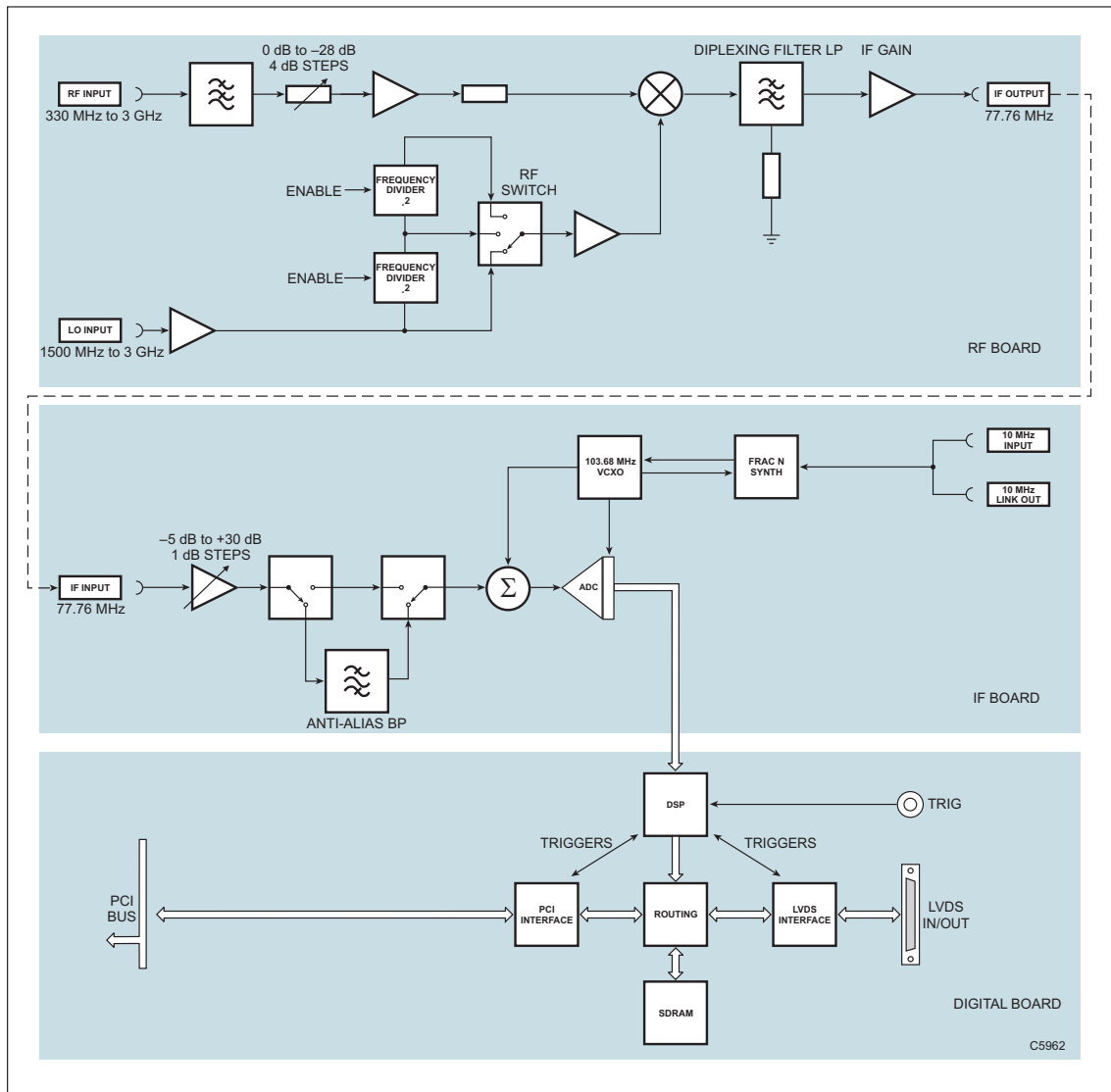


Fig. 4-1 Block schematic diagram

Chapter 5 ACCEPTANCE TESTING

Introduction

The test procedures in this chapter enable you to verify that the 3030A wideband RF digitizer module is meeting its specified performance.

Abbreviations

Throughout the chapter, the following abbreviations are used:

UUT	Unit Under Test
SFP	Soft Front Panel

Test procedures

Each test procedure shows you how to configure the test equipment and then describes how to perform the test. Tables are provided for recording your results. Measurements should fall within the maximum and minimum limits indicated, provided that you use the recommended test equipment and adhere to the test precautions.

The tests recommend the use of conventional ‘rack and stack’ test equipment, apart from the LO for the 3030A UUT, where an Aeroflex 3011 RF synthesizer is specified. Other PXI modules may be used as long as they comply with the minimum specification.

Controlling the UUT

Control the UUT with the RF Investigator SFP, which is on the supplied CD-ROM (part no. 46886/028) as part of the common installation.

Follow the instructions provided in the 3000 Series Common Installation Guide (part no. 46882/663) to ensure that this software is correctly installed.

Each test procedure relies on the module being set to its power-up conditions. To avoid switching the PXI chassis off and back on, close and restart the RF Investigator SFP, then boot the module.

Note that for clarity, the PXI chassis and controller are not shown in the setup diagrams for the test equipment.

Recommended test equipment

The test equipment recommended is shown below. You may use alternative equipment provided it complies with the stated minimum specification. The minimum specification is only an indication of the required performance. With all measurements, you should ensure that the performance of the test equipment has adequate stand-off from the specification of the UUT.

Description	Minimum specification	Example	Test parameters
Signal generator	330 MHz to 3 GHz Arbitrary waveform generator	Aeroflex 3413 with Options 5 and 21	RF level accuracy ACLR
PXI synthesizer	1.5 GHz to 3 GHz	Aeroflex 3011	Local oscillator
Power meter and sensor	330 MHz to 3 GHz	Aeroflex 6960B and 6912	RF level accuracy
Power splitter	3 GHz	Agilent 11667B	RF level accuracy
Microwave scalar analyzer	330 MHz to 3 GHz	Aeroflex 6821, 6822 or 6823	RF Input return loss
Autotester	330 MHz to 3 GHz	Aeroflex 59999/168	RF Input return loss
50 ohm SMA termination	330 MHz to 3 GHz	Aeroflex 82532	Residual responses / noise spectral density
Oscilloscope	10 MHz	Tektronix TDS3032	10 MHz reference output

Test precautions

To ensure minimum errors and uncertainties when making measurements, it is important to observe the following precautions:

- Always use recently calibrated test equipment, with any correction figures taken into account, to establish a known traceable limit of performance uncertainty. This uncertainty must be allowed for in determining the accuracy of measurements.
- Ensure any user calibration routines are performed when necessary. On most power meters, it is also necessary to perform an auto-zero routine.
- Use the shortest possible connecting leads.
- Allow 20 minutes for the UUT to warm up, plus any extra time for other test equipment being used.

Checking that the UUT powers up correctly

This test ensures that the module powers up in a satisfactory manner and that the internal self-tests do not report any errors. This test assumes that the module is fitted in a PXI chassis and that the necessary supplied software is installed on the host controller.

- Apply power to the PXI chassis.
- Press the supply switch on the PXI chassis.

Wait for the operating system to complete its boot-up sequence.

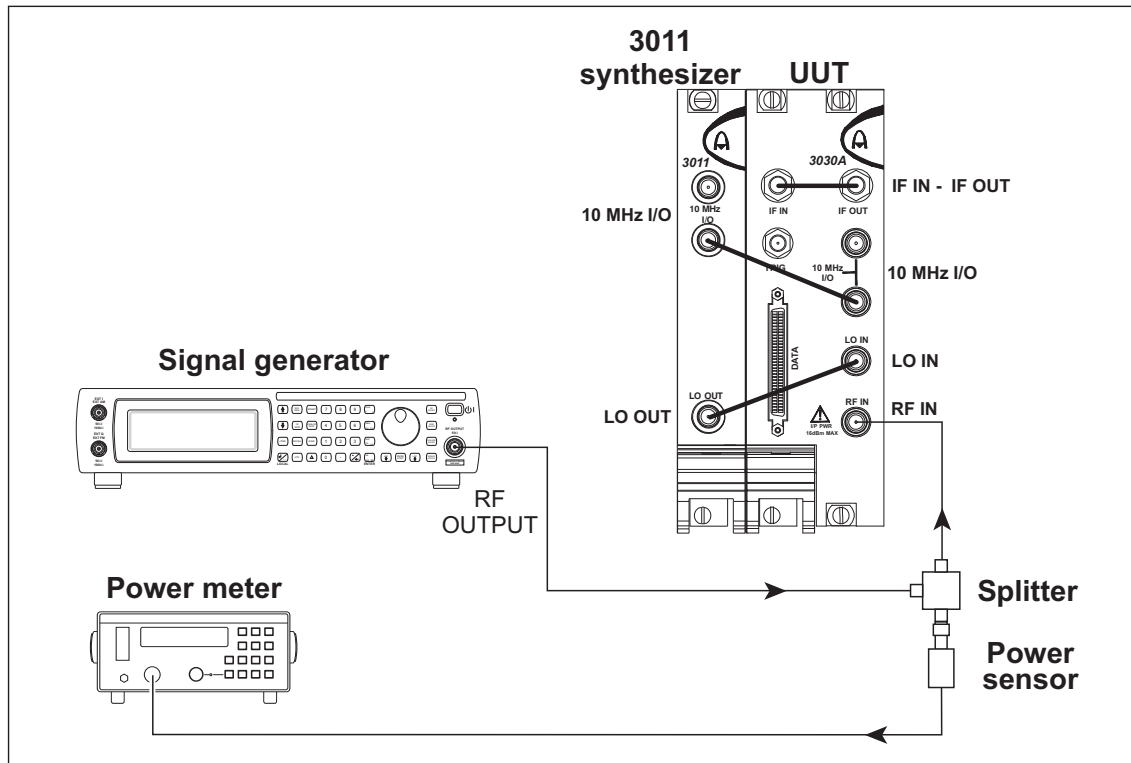
- Click on *Start\Programs\Aeroflex\RF Investigator*.

Boot the module via the SFP as follows:

- Click on *File\Resource\[Dig]*.
- After a few seconds, the appropriate indicators turn green to show that the boot sequence has completed successfully.
- Click **OK**.

Level accuracy test

This test measures the RF level accuracy across the frequency range of the instrument at a selection of RF attenuator and IF attenuator settings. The first two sets of values recorded are with the RF attenuation fixed at 16dB with minimum (0 dB), then maximum (35 dB), IF attenuation. The second two sets of values recorded are with the IF attenuation fixed at 12 dB with minimum (4 dB), then maximum (28 dB) RF attenuation.



C5963

Fig. 5-1 Level accuracy test setup

ACCEPTANCE TESTING

1 Connect the test equipment as shown in Fig. 5-1.

2 On the signal generator set:

Carrier Frequency	330 MHz
RF Level	0 dBm

3 On the UUT set:

Centre Frequency (MHz)	330.000000
RF Level (dBm)	10
RF Atten (dB)	16
IF Atten (dB)	0
Trace Mkr	click check box

Hint: right-click on **Centre Frequency (MHz)** and set a frequency step of 250 MHz. From the 500 MHz frequency upwards, this will speed up the test. Set a 250 MHz step on the signal generator also.

4 On the UUT:

click on **Single**, then **Peak**

Read the Mkr. level at the top of the display and record the value in Table 5-1 column a.

5 Read the level displayed on the power meter and record the value in Table 5-1 column b.

6 Record the error in Table 5-1 column c. $(c = a - b)$

7 Repeat (4) to (6) for the remaining frequencies in Table 5-1, setting the UUT and signal generator frequencies as necessary.

8 On the UUT set:

IF Atten	35
----------	----

9 Repeat (4) to (6) using Table 5-2.

10 On the UUT set:

RF Atten (dB)	4
IF Atten (dB)	12

11 Repeat (4) to (6) using Table 5-3.

ACCEPTANCE TESTING

12 On the UUT set:

RF Atten (dB) 28

13 Repeat (4) to (6) using Table 5-4.

Table 5-1 Amplitude accuracy with 16 dB input atten. and 0 dB IF atten.

Frequency (MHz)	UUT display level (dBm) a	Power meter reading (dBm) b	Error (dBm) c	Limit (dBm)
330				±0.45
500				±0.45
750				±0.45
1000				±0.45
1250				±0.45
1500				±0.45
1750				±0.45
2000				±0.45
2250				±0.45
2500				±0.45
2750				±0.45
3000				±0.45

ACCEPTANCE TESTING

Table 5-2 Amplitude accuracy with 16 dB input atten. and 35 dB IF atten.

Frequency (MHz)	UUT display level (dBm) a	Power meter reading (dBm) b	Error (dBm) c	Limit (dBm)
330				±0.45
500				±0.45
750				±0.45
1000				±0.45
1250				±0.45
1500				±0.45
1750				±0.45
2000				±0.45
2250				±0.45
2500				±0.45
2750				±0.45
3000				±0.45

ACCEPTANCE TESTING

Table 5-3 Amplitude accuracy with 4 dB input atten. and 12 dB IF atten.

Frequency (MHz)	UUT display level (dBm) a	Power meter reading (dBm) b	Error (dBm) c	Limit (dBm)
330				±0.45
500				±0.45
750				±0.45
1000				±0.45
1250				±0.45
1500				±0.45
1750				±0.45
2000				±0.45
2250				±0.45
2500				±0.45
2750				±0.45
3000				±0.45

ACCEPTANCE TESTING

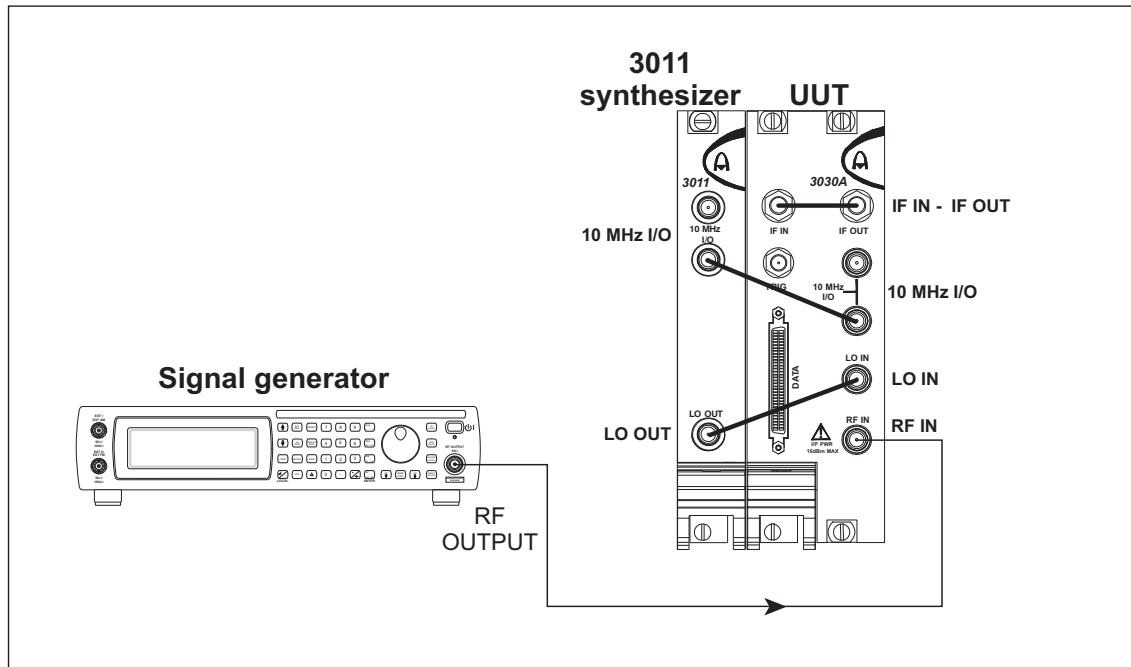
Table 5-4 Amplitude accuracy with 28 dB input atten. and 12 dB IF atten.

Frequency (MHz)	UUT display level (dBm) a	Power meter reading (dBm) b	Error (dBm) c	Limit (dBm)
330				±0.45
500				±0.45
750				±0.45
1000				±0.45
1250				±0.45
1500				±0.45
1750				±0.45
2000				±0.45
2250				±0.45
2500				±0.45
2750				±0.45
3000				±0.45

Linearity and noise

Adjacent channel leakage ratio (ACLR)

Load the signal generator's arbitrary waveform generator with the 3GPP, 64-channel, test model 1, downlink example test waveform: *ats_3gpp_fdd_fwd_tm1_64ch_sc0_v5pt1.aiq*.



C5964

Fig. 5-2 ACLR test setup

- 1 Connect the test equipment as shown in Fig. 5-2.

- 2 On the signal generator set:

Carrier Frequency	330 MHz
RF Level	0 dBm

Select and play the waveform:

ats_3gpp_fdd_fwd_tm1_64ch_sc0_v5pt1.aiq

- 3 On the UUT set:

Carrier Frequency (MHz)	330.000000
RF Level (dBm)	0
RF Atten	12 ¹
IF Atten	15 ¹
ACP	click check box

From the toolbar, click on *Config\Spectrum Analyser* and check that the following parameters are set:

Analysis Width (MHz)	20
Percentage	99.00
Centre Freq (MHz)	0
Channel Spacing (MHz)	5.00
Channel Width (MHz)	3.84
Alpha	0.22

Click **OK**.

- 4 On the UUT:

Click on **Single**.

Read the upper and lower adjacent channel power values and record them in Table 5-5.

- 5 Repeat (2) to (4) for the remaining frequencies in Table 5-5, setting the UUT and signal generator frequencies as necessary.

¹ It may be necessary to adjust the input attenuation and/or the IF attenuation to achieve best results. Do not allow the A2D indicator to turn red as this indicates a front-end overload.

ACCEPTANCE TESTING

Table 5-5 ACLR results

Frequency (MHz)	1 st lower (dBc)	1 st upper (dBc)	Limit (dBc)
330			<-63
400			<-63
800			<-63
1200			<-63
1600			<-63
2000			<-63
2400			<-63
2800			<-63
3000			<-63

Residual responses

No test equipment is required.

- 1 On the UUT, connect a 50 ohm termination to the RF IN connector.
- 2 On the UUT set:

Centre Frequency (MHz)	340.000000
Step Size	20 MHz
Ref Level (dBm)	-70
Span (MHz)	20
NBW (kHz)	10.0
RF Atten	0
IF Atten	0
Averaging	10
Trace Mkr	click check box
- 3 On the UUT:
Click on **Single**, then **Peak**.
- 4 Check the displayed trace for any residual responses. Increase Centre Frequency in 20 MHz steps up to 3000 MHz using the Centre Frequency increment icon, and repeat (3) above, waiting briefly for the sweep averaging to complete. Record the level and frequency of the largest residual responses, if any are found, in Table 5-6.

Table 5-6 Residual responses results

Frequency (MHz)	Result (dBm)	Limit (dBm)
		-100
		-100
		-100
		-100
		-100
		-100
		-100
		-100

Noise spectral density

No test equipment is required.

- 1 On the UUT, connect a 50 ohm termination to the RF IN connector.
- 2 On the UUT set:

Centre Frequency (MHz)	330.000000
Step Size	100 MHz
Ref Level (dBm)	-70
Span (MHz)	20
NBW (kHz)	10.0
RF Atten	0
IF Atten	0
Averaging	50
Trace Mkr	click check box

- 3 On the UUT:

Click on **Single**, then **Peak**.

It may be necessary to drag the marker off any residual response as this gives a false indication of the noise floor. Subtract 40 dB from the Mkr. level at the top of the display (to normalize to a 1 Hz bandwidth) and record the value in Table 5-7

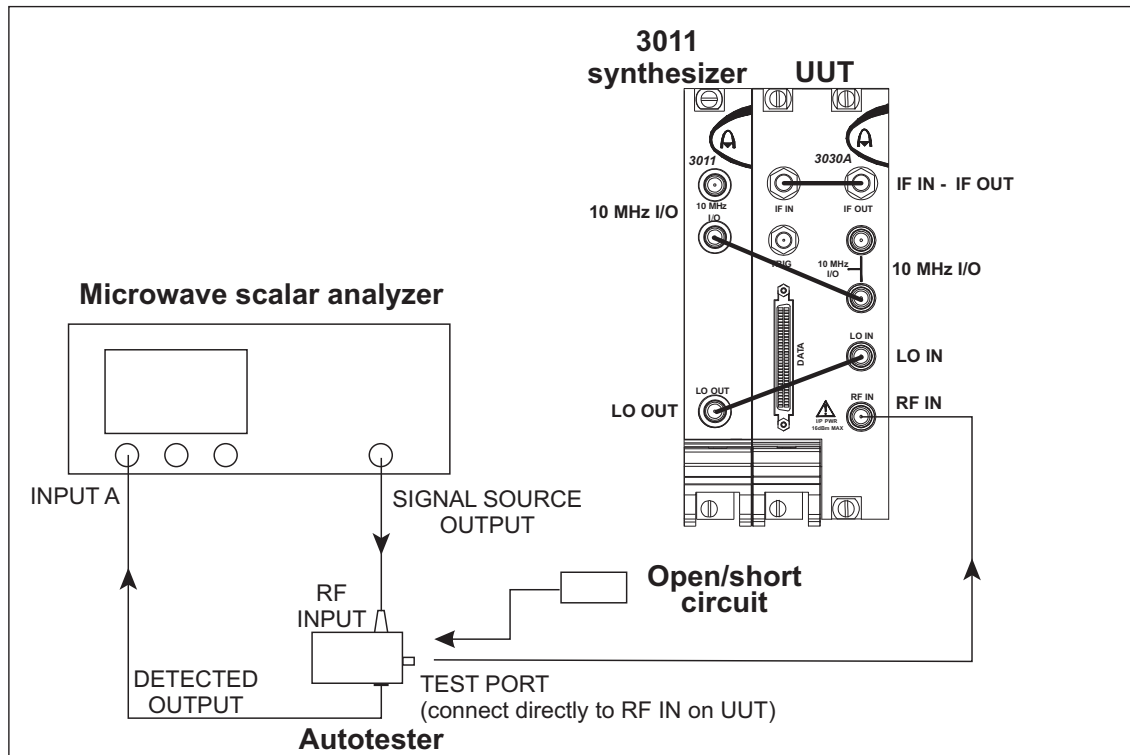
- 4 Repeat (3) for each of the frequencies shown in Table 5-7, using the Centre Frequency increment icon where appropriate.

ACCEPTANCE TESTING

Table 5-7 Noise spectral density results

Frequency (MHz)	Result (dBm)	Limit (dBm)
330		-145
400		-145
600		-145
800		-145
999		-145
1000		-140
1200		-140
1400		-140
1600		-140
1800		-140
2000		-140
2100		-140
2200		-140
2300		-140
2400		-140
2500		-140
2600		-140
2700		-140
2800		-140
2900		-140
3000		-140

RF input return loss



C5965

Fig. 5-3 RF input VSWR test setup

- 1 Connect the test equipment as shown in Fig. 5-3.
- 2 On the UUT set:

RF Level (dBm)	0
RF Atten	8
IF Atten	15

- 3 On the Microwave Scalar Analyzer (MSA) define the source conditions as follows:
[PRESET]
[Full]
[SOURCE]
[Set Start Frequency] 330 [Mu]
[Set Stop Frequency] 3 [Gn]
- 4 Calibrate the MSA for VSWR measurements as follows:
[CAL]
[Short AND Open Cal]
- 5 Connect the short-circuit to the test port of the autotester.
- 6 On the MSA select [Continue]
- 7 Remove the short-circuit and connect the open-circuit to the test port of the autotester.
- 8 On the MSA select [Continue]
- 9 Remove the open-circuit and connect the test port of the autotester directly to the UUT's RF IN input.
- 10 On the MSA select:
[FORMAT/SCALING]
[VSWR]

Using the rotary control on the MSA, measure the worst-case return loss and record the frequency and value in Table 5-8.

Table 5-8 RF input return loss result

Frequency (MHz)	Result (dB)	Limit (dB)
		16 dB

AEROFLEX INTERNATIONAL LTD.

SOFTWARE LICENCE AND WARRANTY

This document is an Agreement between the user of this Licensed Software, the Licensee, and Aeroflex International Limited, the Licensor. By opening this Software package or commencing to use the software you accept the terms of this Agreement. If you do not agree to the terms of this Agreement please return the Software package unopened to Aeroflex International Limited or do not use the software.

1. DEFINITIONS

The following expressions will have the meanings set out below for the purposes of this Agreement:

Add-In Application Software	Licensed Software that may be loaded separately from time to time into the Equipment to improve or modify its functionality
Computer Application Software	Licensed Software supplied to run on a standard PC or workstation
Designated Equipment	the single piece of Equipment upon which the licensed software is installed
Downloaded Software	any software downloaded from an Aeroflex web site
Embedded Software	Licensed Software that forms part of the Equipment supplied by Aeroflex and without which the Equipment cannot function
Licence Fee	the consideration ruling at the date of this Agreement for the use of one copy of the Licensed Software on the Designated Equipment
Licensed Software	All and any programs, listings, flow charts and instructions in whole or in part including Add-in, Computer Application, Downloaded and Embedded Software supplied to work with Designated Equipment

2. LICENCE FEE

The Licensee shall pay the Licence Fee to Aeroflex in accordance with the terms of the contract between the Licensee and Aeroflex.

3. TERM

This Agreement shall be effective from the date hereof and shall continue in force until terminated under the provisions of Clause 9.

4. LICENCE

- 4.1 Unless and until terminated, this Licence confers upon the Licensee the non-transferable and non-exclusive right to use the Licensed Software on the Designated Equipment.
- 4.2 The Licensee may not use the Licensed Software on other than the Designated Equipment, unless written permission is first obtained from Aeroflex and until the appropriate additional Licence Fee has been paid to Aeroflex.
- 4.3 The Licensee may not amend or alter the Licensed Software and shall have no right or licence other than that stipulated herein.

- 4.4 The Licensee may make not more than two copies of the Licensed Software (but not the Authoring and Language Manuals) in machine-readable form for operational security and shall ensure that all such copies include Aeroflex's copyright notice, together with any features which disclose the name of the Licensed Software and the Licensee. Furthermore, the Licensee shall not permit the Licensed Software or any part to be disclosed in any form to any third party and shall maintain the Licensed Software in secure premises to prevent any unauthorised disclosure. The Licensee shall notify Aeroflex immediately if the Licensee has knowledge that any unlicensed party possesses the Licensed Software. The Licensee's obligation to maintain confidentiality shall cease when the Licensed Software and all copies have been destroyed or returned. The copyright in the Licensed Software shall remain with Aeroflex. The Licensee will permit Aeroflex at all reasonable times to audit the use of the Licensed Software.
- 4.5 The Licensee will not disassemble or reverse engineer the Licensed Software, nor sub-licence, lease, rent or part with possession or otherwise transfer the whole or any part of the Licensed Software.

5 WARRANTY

- 5.1 Aeroflex certifies that the Licensed Software supplied by Aeroflex will at the time of delivery function substantially in accordance with the applicable Software Product Descriptions, Data Sheets or Product Specifications published by Aeroflex.
- 5.2 The warranty period (unless an extended warranty for Embedded Software has been purchased) from date of delivery in respect of each type of Licensed Software is:
- | | |
|-------------------------------|-------------|
| Embedded Software | 12 months |
| Add-In Application Software | 90 days |
| Computer Application Software | 90 days |
| Downloaded Software | No warranty |
- 5.3 If during the appropriate Warranty Period the Licensed Software does not conform substantially to the Software Product Descriptions, Data Sheets or Product Specifications Aeroflex will provide:
- 5.3.1 In the case of Embedded Software and at Aeroflex's discretion either a fix for the problem or an effective and efficient work-around.
- 5.3.2 In the case of Add-In Application Software and Computer Application Software and at Aeroflex's discretion replacement of the software or a fix for the problem or an effective and efficient work-around.
- 5.4 Aeroflex does not warrant that the operation of any software will be uninterrupted or error free.
- 6 The above Warranty does not apply to:
- 6.1 Defects resulting from software not supplied by Aeroflex, from unauthorised modification or misuse or from operation outside of the specification.
- 6.2 Third party produced Proprietary Software which Aeroflex may deliver with its products, in such case the third party Software Licence Agreement including its warranty terms shall apply.
- 7 The remedies offered above are sole and exclusive remedies and to the extent permitted by applicable law are in lieu of any implied conditions, guarantees or warranties whatsoever and whether statutory or otherwise as to the software all of which are hereby expressly excluded.

8. INDEMNITY

- 8.1 Aeroflex shall defend, at its expense, any action brought against the Licensee alleging that the Licensed Software infringes any patent, registered design, trademark or copyright, and shall pay all Licensor's costs and damages finally awarded up to an aggregate equivalent to the Licence fee provided the Licensee shall not have done or permitted to be done anything which may have been or become any such infringement and shall have exercised reasonable care in protecting the same failing which the Licensee shall indemnify Aeroflex against all claims costs and damages incurred and that Aeroflex is given prompt written notice of such claim and given information, reasonable assistance and sole authority to defend or settle such claim on behalf of the Licensee. In the defence or settlement of any such claim, Aeroflex may obtain for the Licensee the right to continue using the Licensed Software or replace it or modify it so that it becomes non-infringing.
- 8.2 Aeroflex shall not be liable if the alleged infringement:
- 8.2.1 is based upon the use of the Licensed Software in combination with other software not furnished by Aeroflex, or
 - 8.2.2 is based upon the use of the Licensed Software alone or in combination with other software in equipment not functionally identical to the Designated Equipment, or
 - 8.2.3 arises as a result of Aeroflex having followed a properly authorised design or instruction of the Licensee, or
 - 8.2.4 arises out of the use of the Licensed Software in a country other than the one disclosed to Aeroflex as the intended country of use of the Licensed Software at the commencement of this Agreement.
- 8.3 Aeroflex shall not be liable to the Licensee for any loss of use or for loss of profits or of contracts arising directly or indirectly out of any such infringement of patent, registered design, trademark or copyright.

9. TERMINATION

- 9.1 Notwithstanding anything herein to the contrary, this Licence shall forthwith determine if the Licensee:
- 9.1.1 As an individual has a Receiving Order made against him or is adjudicated bankrupt or compounds with creditors or as a corporate body, compounds with creditors or has a winding-up order made against it or
 - 9.1.2 Parts with possession of the Designated Equipment.
- 9.2 This Licence may be terminated by notice in writing to the Licensee if the Licensee shall be in breach of any of its obligations hereunder and continue in such breach for a period of 21 days after notice thereof has been served on the Licensee.
- 9.3 On termination of this Agreement for any reason, Aeroflex may require the Licensee to return to Aeroflex all copies of the Licensed Software in the custody of the Licensee and the Licensee shall, at its own cost and expense, comply with such requirement within 14 days and shall, at the same time, certify to Aeroflex in writing that all copies of the Licensed Software in whatever form have been obliterated from the Designated Equipment.

10. THIRD PARTY LICENCES

The software or part thereof may be the proprietary property of third party licensors. In such an event such third party licensors (as referenced on the package or the Order Acknowledgement) and/or Aeroflex may directly enforce the terms of this Agreement and may terminate the Agreement if the Licensee is in breach of the conditions contained herein.

11. EXPORT REGULATIONS

The Licensee undertakes that where necessary the Licensee will conform with all relevant export regulations imposed by the Governments of the United Kingdom and/or the United State of America.

12. NOTICES

Any notice to be given by the Licensee to Aeroflex shall be addressed to:

Aeroflex International Limited, Longacres House, Six Hills Way, Stevenage, SG1 2AN, UK.

13. LAW AND JURISDICTION

This Agreement shall be governed by the laws of England and shall be subject to the exclusive jurisdiction of the English courts. This agreement constitutes the whole Contract between the parties and may be changed only by memorandum signed by both parties.

© AEROFLEX INTERNATIONAL LTD 2007

**CHINA Beijing**

Tel: [+86] (10) 6539 1166

Fax: [+86] (10) 6539 1778

CHINA Shanghai

Tel: [+86] (21) 5109 5128

Fax: [+86] (21) 5150 6112

FINLAND

Tel: [+358] (9) 2709 5541

Fax: [+358] (9) 804 2441

FRANCE

Tel: [+33] 1 60 79 96 00

Fax: [+33] 1 60 77 69 22

GERMANY

Tel: [+49] 8131 2926-0

Fax: [+49] 8131 2926-130

HONG KONG

Tel: [+852] 2832 7988

Fax: [+852] 2834 5364

INDIA

Tel: [+91] 80 5115 4501

Fax: [+91] 80 5115 4502

KOREA

Tel: [+82] (2) 3424 2719

Fax: [+82] (2) 3424 8620

SCANDINAVIA

Tel: [+45] 9614 0045

Fax: [+45] 9614 0047

SPAIN

Tel: [+34] (91) 640 11 34

Fax: [+34] (91) 640 06 40

UK Burnham

Tel: [+44] (0) 1628 604455

Fax: [+44] (0) 1628 662017

UK Stevenage

Tel: [+44] (0) 1438 742200

Fax: [+44] (0) 1438 727601

Freephone: 0800 282388

USA

Tel: [+1] (316) 522 4981

Fax: [+1] (316) 522 1360

Toll Free: (800) 835 2352

As we are always seeking to improve our products, the information in this document gives only a general indication of the product capacity, performance and suitability, none of which shall form part of any contract. We reserve the right to make design changes without notice.

web www.aeroflex.comEmail info-test@aeroflex.comNovember 2005
